

Sources

ISSN Find sources

ISSN: 0992-499X

i Improved Citescore ✕

We have updated the CiteScore methodology to ensure a more robust, stable and comprehensive metric which provides an indication of research impact, earlier. The updated methodology will be applied to the calculation of CiteScore, as well as retroactively for all previous CiteScore years (ie. 2018, 2017, 2016...). The previous CiteScore values have been removed and are no longer available.

[View CiteScore methodology.](#) >

Filter refine list

[Apply](#) [Clear filters](#)

Display options

Display only Open Access journals

Counts for 4-year timeframe

- No minimum selected
- Minimum citations
- Minimum documents

Citescore highest quartile

- Show only titles in top 10 percent
- 1st quartile
- 2nd quartile
- 3rd quartile
- 4th quartile

Source type

- Journals
- Book Series
- Conference Proceedings
- Trade Publications

[Apply](#) [Clear filters](#)

1 result

[Download Scopus Source List](#) [Learn more about Scopus Source List](#)

All Export to Excel Save to source list

View metrics for year:

Source title ↓	CiteScore ↓	Highest percentile ↓	Citations 2018-21 ↓	Documents 2018-21 ↓	% Cited ↓
<input type="checkbox"/> 1 Revue d'Intelligence Artificielle	1.9	28% 193/269 Artificial Intelligence	473	253	59



[^ Top of page](#)

About Scopus

[What is Scopus](#)

[Content coverage](#)

[Scopus blog](#)

[Scopus API](#)

[Privacy matters](#)

Language

[日本語版を表示する](#)

[查看简体中文版本](#)

[查看繁體中文版本](#)

[Просмотр версии на русском языке](#)

Customer Service

[Help](#)

[Tutorials](#)

[Contact us](#)

ELSEVIER

[Terms and conditions ↗](#) [Privacy policy ↗](#)

Copyright © Elsevier B.V. ↗. All rights reserved. Scopus® is a registered trademark of Elsevier B.V.

We use cookies to help provide and enhance our service and tailor content. By continuing, you agree to the use of cookies ↗.



Proof Read 1

Study of Climate Change in the Mandalika International Circuit Area Using Neural Network Backpropagation

Vera Mandailina^{1*}, Atin Nurhalimah¹, Saba Mehmood², Syaharuddin¹, Ibrahim³

¹ Department of Mathematics Education, Universitas Muhammadiyah Mataram, Mataram postal code, Indonesia

² Department of Mathematics Education, Thal University Bhakkar, Punjab postal code, Pakistan

³ Department of Environmental Engineering, Universitas Muhammadiyah Mataram, Mataram postal code, Indonesia

Corresponding Author Email: vrmandailina@gmail.com

<https://doi.org/10.18280/ria.xxxxxx>

ABSTRACT

Received: 17 September 2022

Accepted: 28 December 2022

Keywords:

neural network, backpropagation, climate change, Schmidt-Ferguson classification

Climate change is a global phenomenon that also causes small-scale effects. This study aims to determine future climate changes in the Mandalika International Circuit area using the artificial neural network of the MATLAB GUI-based backpropagation method. The simulation stage used daily rainfall intensity data collected in the Mandalika International Circuit area from 2012-2021 (365 data). A preliminary analysis concluded that the Mandalika International Circuit area is dominated by a very wet climate according to the Schmidt-Ferguson classification, which occurred in 2012, 2013, 2017, and 2021. This study used two architectural models with two and three hidden layers. The TRAINRP training function and the LOGSIG activation function were utilized at each hidden layer. Between the two architectures, the better architecture was selected, namely the 100-50-10-1 (three hidden layers) that resulted in an accuracy rate of 99.90% and an MSE of 0.0412376 achieved in the 258th iteration. These results indicate that the area has a very wet climate with the highest rain intensity in March and the lowest in January. The results of this study show that the backpropagation method can be used to help formulate an alternative policy on the measures for handling and mitigating extreme climate change in upcoming periods, especially during international events at the Mandalika International Circuit area.

1. INTRODUCTION

Indonesia has recently hosted two international racing sports events, namely the WSBK (World Superbike) and MotoGP (Grand Prix Motorcycle) at Mandalika International Circuit. These events are prestigious motor racing sports events at the global level. Mandalika International Circuit is an arena used to hold international racing events located in the Mandalika Special Economic Zone (SEZ). In organizing such events, it is required to make efforts to anticipate climate conditions, especially the intensity of rainfall. According to Haliza [1], climate change can be defined as a change in the state of the climate. This change can be identified, for example by using statistical tests, by changes in the mean or variability of its properties that persist for a long time, usually for decades or longer.

Sari et al. [2] stated that forecasting is an activity to predict what will happen in the future. Siregar and Wanto [3] further elaborated that prediction is a presumption about the occurrence of an event in the future and forecasting is very helpful in planning and policy-making processes both in the government and non-government sectors. Predictive analysis is very important to conduct in a study so that the research becomes more precise and directed. Therefore, a good analysis using tested methods is needed so that the resulting accuracy can be truly accountable. Lee et al. [4] argued that rainfall prediction is essential to prevent floods, manage water resources, save lives and property, and secure economic activities.

One of the prediction methods widely used by researchers is artificial neural networks (ANN). Nogay et al. [5] stated that artificial neural network technology is one of the latest products of humanity's efforts in the research and imitation of nature. Artificial neural networks are programs designed to simulate the behavior of simple biological nervous systems. An artificial neural network is shaped by structuring a foreseen number of artificial neural cells in a certain architecture to process data. Nayak et al. [6] argued that artificial neural network algorithms have become an attractive inductive approach in rainfall prediction owing to their high nonlinearity, flexibility, and data-driven learning in building models without any prior knowledge about catchment behavior and flow processes. They are successfully used today in various aspects of science and engineering because of their ability to model both linear and non-linear systems without the need to make assumptions as are implicit in most traditional statistical approaches. The neural network has been used as a more effective model than simple linear regression. According to Abbot and Marohasy [7], the main advantage of neural networks lies in their ability to represent linear and non-linear relationships and the ability to learn these relationships directly from the data being modelled. Traditional linear models are inadequate for modeling data containing non-linear characteristics. This is emphasized by Chaturvedi [8] that an artificial neural network can be used for making predictions as it can examine and determine the historical data used for prediction. NN has a better accuracy than statistical and mathematical models. They work on the principle of biological

Commented [hd1]: Please add postal code after city.

Commented [hd2]: Please add postal code after city.

Commented [hd3]: Please add postal code after city.

neurons, which is a type of data-driven technique. The conjunction between meteorological parameters and rainfall can be analyzed using NN. Furthermore, Wahyuni et al. [9] stated that climate change in the world has caused a lot of impacts on changing rainfall patterns. This requires a method that can predict rainfall based on rainfall patterns that occur after climate change. Disasters can be anticipated with accurate information about how much rainfall will fall at a location in a certain period.

One of the important aspects of implementing backpropagation for forecasting rainfall is the change of seasons. According to Sharma and Nijhawan [10] and Govinda and Hiremath [11], backpropagation is the common method for training neural networks. This is a supervised learning method that requires a dataset of the desired output from many inputs, making up the training set and is most useful for the feed-forward network (networks that have no feedback or simply no connection in that loop). Hayat et al. [12] further described that the backpropagation algorithm architecture consists of three layers, namely the input layer, hidden layer, and output layer. At the input layer, there is no computational process, but at this layer, the X signal input occurs at the hidden layer. At the hidden and output layer, the computation process occurs for weight and bias, and the magnitude of the hidden output and output layer is also calculated based on certain activation functions. In this backpropagation algorithm, the binary sigmoid activation function was used because the expected output is between 0 and 1. At the input layer, the input was varied with X_n ; while at the hidden layer there were weight (V_{ij}) and bias (V_{oj}), and Z as the hidden layer data. At the output layer, there are weight (W_{ij}), bias (W_{oj}), and Y as the output data.

The backpropagation method is a method that is quite well known and has been widely applied by previous researchers, including Jabjone [13] who applied artificial neural networks to predict rice yields in Thailand's Phimai District in 2002-2007. The results show that neural networks (8, 19, and 17) provided the lowest value of RMSE of 10.57 and MAPE of 2.3%. Naik and Pathan [14] also presented a modified backpropagation artificial neural network model for classifying and predicting Indian monsoon precipitation. The weather data were collected from the Meteorological Department with 80% of the total data were used for training purposes and 20% for validation purposes. The accuracy of the predictions achieved was between 80% and 90%, thus the neural networks were suitable for predicting precipitation. According to Wu et al. [15], the artificial neural network model can recognize patterns of data through learning process and it has been applied to attain medical decision support. They utilized 15 data inputs with a single hidden layer architecture and obtained an accuracy rate of 85%. Furthermore, Wanto et al. [16] conducted a study to predict the Consumer Price Index (CPI) of the foodstuffs group using the artificial neural network backpropagation and Fletcher Reeves Conjugate Gradient. This study resulted in an accuracy rate of 75% and an MSE of 0.0142803691 using the backpropagation method with architecture of 12-15-1, the best architecture used. Lesnussa et al. [17] also utilized the artificial neural network of backpropagation to predict rainfall in the city of Ambon. This study utilized monthly rainfall data from 2011 to 2015 with a one-layer hidden 3-12-1 architecture. The results of training and testing data show that the accuracy rate of precipitation prediction obtained was 80% with an alpha of 0.7, an epoch of 10000, and an MSE value of 0.022.

According to Wahyuni et al. [9], based on their research a learning rate of 0.01, an architecture (4-5-3) of 4 inputs, 5 hidden layers, and 3 outputs with a maximum iteration of 1500 and error tolerance of 0.01 obtained the best results at the maximum iteration condition (1500) with an MSE value of 0.342. Setti and Wanto [18] analyzed the prediction of the highest number of internet users in the world using the backpropagation algorithm with a focus on data in 25 countries from 2013-2017. The accuracy result was 92% and the MSE was 0.0015 on the best network architecture of 3-50-1. In another study, Pamungkas et al. [19] applied the backpropagation to predict the production of *Litopenaeus vannamei* and *Penaeus monodon* shrimps in Indramayu Regency, which performed well during training. They recommended the trainGD function as a good training function with the lowest MAPE of 19.28%. Kouadri et al. [20] also evaluated the suitability of groundwater for human consumption and modelled water quality indices, temporally and spatially, using artificial neural networks. A total of 37 samples were harvested from eight different wells in the region throughout 2016 and the model recorded an MSE with an error rate of 9.3%. Syaharuddin et al. [21] applied backpropagation with architecture 144-10-5-1 for wind speed prediction reaching an accuracy rate of 99.9% with a learning rate of 0.7. In another study, Syaharuddin et al. [22] predicted an inflation rate using the backpropagation method and obtained an average yield of 0.213 with an MSE of 0.0053. They utilized a 120-10-5-1 architecture, trainrp as the training function and logsig as the activation function.

The results of these studies show that there have been many studies that apply the backpropagation neural network using two hidden layers. The input data used averaged 3-5 years, learning rate 0.7, and MSE value 0.0001-1.64. Therefore, so far, there is no research that uses backpropagation with three hidden layers and compares the accuracy results with two hidden layers. In addition, the learning rate that the researchers use is too large, where the role of learning rate accelerates the process of training and testing data but will affect the accuracy of the architecture. Therefore, one of the novelties in this research is to add a momentum parameter to the three hidden layer architecture to help reduce the resulting error. Furthermore, in this research we use data for the last 10 years, using a relatively small learning rate. We tested the architecture on a case study of rainfall data in the Mandalika International Circuit area. Hopefully, the prediction results can be used to determine rainfall trends in future and climate change in the region.

2. RESEARCH METHODS

2.1 Data selection

This study used quantitative data to solve the research problems. The focus of the data used is the daily rainfall time series data in the Mandalika International Circuit area in Indonesia from 1 January 2012 to 31 December 2021 at 8.895oS and 116.306oE.

2.2 Research procedure

The accuracy parameter used in this forecasting was the Mean Square Error (MSE) and Root Mean Square Error (RMSE) assisted by MATLAB'S Graphical User Interface

(GUI). Architectural design used to find the optimal NN configuration is also known as NN structural training, which consists of three NN layers, namely one input layer, one hidden layer, and one output layer. The number of neurons in the input layer and output layer depends on the problem itself [23, 24]. This is in line with Haviluddin and Alfred [25], who stated that the backpropagation network architecture generally consists of three layers, namely the input layer, the hidden layer, and the output layer. Similarly, the proper design of NN offers significant improvements to the learning system. Its components, such as nodes, weights, and layers are responsible for the development of various NN models. Single-layer perceptron (SLP) consists of input and output layers, making it the simplest form of an NN model [26]. The authors formulated and used simple and necessary research procedures for the research, as presented in Figure 1.

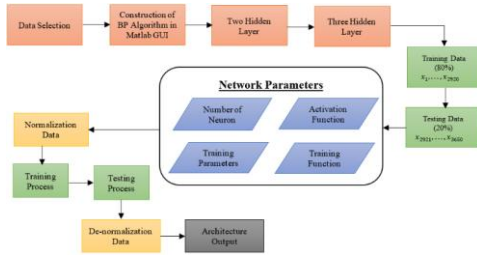


Figure 1. Flowchart of research

Based on Figure 1, after the data were obtained, the backpropagation algorithm was then determined using the MATLAB GUI. The artificial neural network model of the backpropagation method used to determine patterns was implemented to separate the data that will be used as training data (from 2012 to 2019 or 80%) and testing data (from 2020 to 2021 or 20%). Afterward, the prediction phase used data from 2012 to 2021 to predict rainfall data in 2022 (a 10 year-span). We use Z-score techniques to normalize and de-normalize the data (equation 1). The last stage of interplay and conclusion of the output results were obtained from the MATLAB R2013a GUI, with input results including graphs, epochs, prediction results, MSEs and RMSEs of each datum

$$Z = \frac{x_i - \bar{x}_i}{\sigma} \quad (1)$$

2.3 Neural network backpropagation architecture

Backpropagation architecture consisting of input layer, hidden layer, and output layer was connected by activation and weight functions. Therefore, data prediction y_k can be determined by formula:

$$y_k = f \left(w_{0k} + \sum_{j=1}^p w_{jk} \cdot f \left(v_{0j} + \sum_{i=1}^n v_{ij} \cdot x_i \right) \right) \quad (2)$$

variables $x_1, x_2, \dots, x_j, \dots, x_n$ are an input layer determined by the amount of input data and only one layer, y_1, y_2, \dots, y_k are the output layer as well as one layer. In Eq. (2), $v_{11}, v_{1j}, \dots, v_{ij}$

are weight matrices that connect the input layer and the hidden layer, while $w_{11}, w_{1k}, \dots, w_{jk}$ are weight matrices that connect the hidden layer and the output layer.

Backpropagation architecture design was used to determine the best architecture with certain parameters through training and testing of previously shared data. In this study, the architectural parameters used were from the NN architecture of the backpropagation method using a learning rate of 0.1 and a momentum of 0.8. Previous research carried out by Mokhtar et al. [27] for data set 2 showed that learning rate of 0.1 and a momentum of 0.8 will generate the best result and the best network architecture achieved was 5-25-1. Syaharuddin et al. [28] in their research also showed that the learning rate value is recommended at intervals of 0.1-0.2 with a RE model value of 0.938 (very high), the momentum value at intervals of 0.7-0.9 with a RE model value of 0.925 (very high), and the number of neurons in the input layer that is smaller than the number of neurons in the hidden layer with a RE model value of 0.932 (very high). Complete information on the network architecture used is as follows

Setting Parameters:

Max. Epoch	: 1000
Error (Goal)	: 0.001
Learning Rate (LR)	: 0.1
Momentum	: 0.8
Show Step	: 25
Activation Function	: logsig (layer hidden) and purelin (layer output).
Training Function	: trainrp

Amount of Neuron (2 layers hidden)

Layer Input	: 10 years x 365 days (prediction data), 8 years x 365 days (training data), and 2 years x 365 days (testing data)
Layer hidden-1	: 100
Layer hidden-2	: 50
Layer output	: 1

Amount of Neuron (3 layers hidden)

Layer Input	: 10 years x 365 days (prediction data), 8 years x 365 days (training data), and 2 years x 365 days (testing data)
Layer Hidden-1	: 100
Layer Hidden-2	: 50
Layer Hidden-3	: 10
Layer Output	: 1

We set the parameters for the backpropagation architecture at the initial stage or before training and testing data. We use a binary sigmoid (logsig) activation function on each hidden layer according to Eq. (3).

$$f(x) = \frac{1}{1 + e^{-x}} \quad (3)$$

3. RESULTS AND DISCUSSION

3.1 Preliminary analysis results

The input of rainfall data for the Mandalika International Circuit area was obtained daily from 2012 to 2021, so 365 data were obtained for each year. The amount of rainfall (mm) calculated each month is displayed in Table 1.

Table 1. The input of rainfall data for the Mandalika International Circuit from 2012 to 2022

Month	2012	2013	2014	2015	2016	2017	2018	2019	2020	2021
January	158,42	139,12	140,54	125,64	15,18	203,89	173,24	56,6	37,54	290,62
February	112,17	67,84	47,53	11,44	18,57	76,91	87,59	4,33	38,98	55,16
March	110,34	28,81	27,62	10,61	4,71	68,53	32,53	18,67	15,98	79,2
April	86,58	81,24	29,93	28,74	21,13	67,52	45,77	24,27	34,56	64,97
May	178,7	142,23	88,85	23,97	94,87	116,33	114,26	69,01	49,93	132,35
June	272,96	285,29	276,43	211,11	250,58	152,82	164,59	220	234,85	156,38
July	296,17	288,77	281,64	161,29	183,68	264,85	270,96	231,66	211,46	206,95
August	138,32	230,58	152,36	209,63	233,14	219,3	149,25	175,17	180,63	121,11
September	287,1	261,98	202,85	226,52	265,41	202,57	218,53	148,01	228,49	232,83
October	185,04	169,07	148,02	95,01	299,36	281,2	90,99	99,81	361,57	294,08
November	187,25	273,03	146,92	125,23	137,15	196,93	148,86	172,01	190,86	257,18
December	93,46	286,69	204,6	92,42	229,21	328,33	135,99	134,92	248,73	241,48
Q-value	0	0,0909	0,3333	0,5	0,5	0	0,2	0,5	0,714	0,0909
Category	Very wet	Very wet	Rather wet	Rather wet	Rather wet	Very wet	wet	Rather wet	Moderate	Very wet

Table 2. Data training and testing results

Hidden layer	Stage	Data	Interval	Amount of data	Iteration	MSE	RMSE
2 Hidden Layers (100-50-1)	Training	8 years (80%)	2012-2019	8 x 365	376	0.0382	0.1954
	Testing	2 years (20%)	2020-2021	2 x 365	37	0.0526	0.2294
3 Hidden Layers (100-50-10-1)	Training	8 years (80%)	2012-2019	8 x 365	133	0.0375	0.1936
	Testing	2 years (20%)	2020-2021	2 x 365	46	0.0502	0.2248

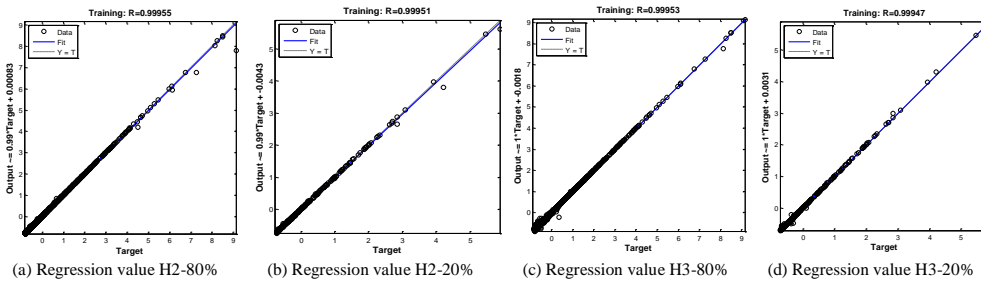


Figure 2. Plot regression of training and testing data

After calculating the amount of rainfall (mm) per month as seen in Table 1, it was discovered that in 2012, 2013, 2017, and 2021 the comparative value (Q) was $0 < Q < 0.143$, so according to the Schmidt Ferguson Climate classification table, they are categorized as very wet months. Meanwhile, the years 2015, 2016, and 2019 obtained a ratio value of $0.600 < Q < 1,000$ so they fall into the category of months with temperate climate. In 2014, the comparison value was $0.333 < Q < 0.600$, making the months categorized as rather wet climate. However, the year 2020 had a very high comparison value (Q) of 0.714, making the months fall under the category of moderate.

Thus, from the results described above, it can be concluded that based on 10 years of rainfall data, the climate in Mandalika International Circuit area according to the Schmidt-Ferguson climate classification can mostly be categorized as very wet climate, which occurred in 2012, 2013, 2017, and 2021, or the peak of high rainfall. Meanwhile, the climate in 2014 was slightly wet; 2015, 2016, and 2019 were dominated by the medium climate; 2018 was mostly categorized as a wet climate; while 2020 was dominated by the extraordinarily dry climate or the peak of the long dry season occurring in the Mandalika International Circuit area.

3.2 Training, testing, and data prediction phase

Generally, there are two stages in the prediction process of NN backpropagation, namely the training and testing stages. According to Hayat et al. [29], the training stage uses data to produce results of backpropagation neural network training, while the testing stage implements the weight of NN from the training phase into the testing. In this study, the architectural pattern of the two hidden layers was 100-50-1 with an input layer of 365, a one hidden layer of 100, two hidden layers of 50 and an output layer of 1. Meanwhile, the architectural pattern for the three hidden layers was 100-50-10-1 with an input layer of 365, a one hidden layer of 100, two hidden layers of 50, three hidden layers of 10, and a layer output of 1. Data training and testing results are presented in Table 2.

Based on Table 2, the two hidden layers in the training stage obtained an MSE value of 0.0382 and RMSE value of 0.1954 achieved during the 376th epoch. Meanwhile, the testing stage obtained an MSE value of 0.0526 and RMSE value of 0.2294 achieved in the 37th epoch. Furthermore, the three hidden layers in the training stage obtained an MSE value of 0.0375 and RMSE value 0.1936 achieved in the 133rd epoch, and the

testing stage obtained an MSE value of 0.0502 and RMSE value 0.2248 achieved in the 46th epoch. The training and testing results show that the architecture with three hidden layers performs well because the MSE and RMSE values are smaller when compared to the architecture with two hidden layers. Then, we strengthen this argument by looking at the pattern of data distribution according to the regression plot can be seen in Figure 2.

Based on Figure 2, we can see that the data distribution pattern using the architecture with three hidden layers is better than the architecture with two hidden layers. Then, the prediction of daily rainfall data in 2022 obtained results as presented in Figures 3 and Figure 4.

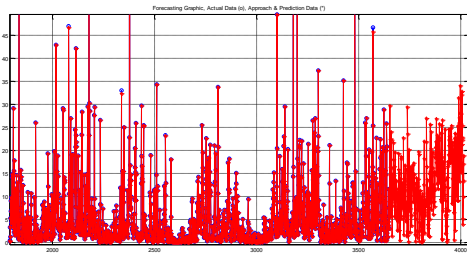


Figure 3. Results of daily rainfall prediction from actual data using two hidden layers

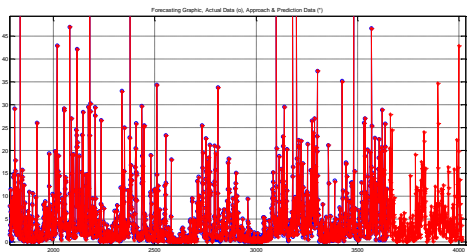


Figure 4. Results of daily rainfall prediction from actual data using three hidden layers

Based on Figure 3, the daily rainfall prediction using two hidden layers to process 10 years (10 x 365 data) obtained an MSE of 0.0417 and RMSE of 0.2047 achieved during the 172th. Meanwhile, the use of three hidden layers as shown in Figure 4 obtained an MSE of 0.0408 and RMSE of 0.2022 achieved during the 164th epoch. Thus, from these two architectural models, it was found that the three hidden layers (100-50-10-1) have predictive results derived from the actual data and can be used for forecasting calculations in future periods; or the MSE and RMSE value of three hidden layers is smaller than that of two hidden layers. This finding is supported by the research of Syaharuddin et al. [30] who argued that the determination of the best number of neurons on backpropagation using three layers with an architecture of 36-73-37-19-1 showed the highest level of accuracy at the time of precipitation data, obtaining an MSE of 0.0291 and an accuracy rate of 99.94% for data training and 99.99% for data testing.

Network performance can still be improved by increasing training data and replacing parameters that can affect performance such as error goals, epoch size, network architecture, and type of activation function. In the following, the authors present the 2022 rainfall forecasting results using two and three hidden layers, as seen in Table 3.

Table 3 shows the result of daily to monthly calculation for 2022 rainfall data in the Mandalika International Circuit area. Following the training stage, out of the two architectures, the best architecture resulted was the 100-50-10-1 (three hidden layers), where the very wet climate criteria according to the Schmidt-Ferguson classification would see the highest rainfall intensity in March with rainfall gains of 406.3721 mm and wet month descriptions, while the lowest rainfall intensity would happen in January with rainfall gains of 83.9642, making it classified as a humid month.

After finding out the climate change forecasting results, especially dynamic changes in the rainfall intensity in the Mandalika International Circuit area, the authors recommend the government or the organizers of WSBK (World Superbike) and MotoGP (Grand Prix Motorcycle) to hold these events in December or January. This aims to avoid high rainfall intensity such as those during previous events and to certainly minimize the occurrence of accidents due to slippery tracks during these events.

Table 3. Rainfall data prediction for 2022

Month	Forecasting			
	Two Hidden Layers		Three Hidden Layers	
	Rainfall (mm)	Category	Rainfall (mm)	Category
January	520.8002	Wet month	83.9642	Humid month
February	248.2224	Wet month	264.5902	Wet month
March	527.2139	Wet month	406.3721	Wet month
April	320.5872	Wet month	290.0869	Wet month
May	297.8724	Wet month	365.1046	Wet month
June	260.7365	Wet month	245.302	Wet month
July	176.2403	Wet month	257.8995	Wet month
August	199.3703	Wet month	306.0636	Wet month
September	149.3004	Wet month	282.586	Wet month
October	290.3435	Wet month	299.5919	Wet month
November	366.5233	Wet month	283.674	Wet month
December	584.0019	Wet month	97.4145	Humid month
Q-value	0		0	
Category	Very Wet		Very Wet	

4. CONCLUSIONS

Based on the Schmidt-Ferguson Criteria Climate Classification, the Mandalika International circuit area was dominated by the very wet climate in 2012, 2013, 2017, and 2021. Meanwhile, in 2014, the climate was moderately wet; 2015, 2016, and 2019 were dominated by the medium climate; 2018 was dominated by the wet climate; while 2020 was dominated by the extraordinary dry climate. The results obtained for two hidden layers in the training stage show an MSE of 0.0382 and RMSE of 0.1954, which was achieved in the 376th epoch, while in the testing stage, the authors obtained an MSE of 0.0526 and RMSE of 0.2294, achieved in the 37th epoch. On the other hand, using the three hidden layers in the training stage, the authors obtained an MSE of 0.0375 and RMSE of 0.1936 achieved during the 133rd epoch, while in the testing stage, the authors obtained an MSE of 0.0502 and RMSE of 0.2248 achieved in the 46th epoch. Furthermore, based on the implementation and testing carried out using the two architectural models, the best architecture obtained was the 100-50-10-1 (three hidden layers) with a "trainrp" training function and "logsig, logsig, logsig, purelin" activation function obtaining a MSE of 0.0408 and RMSE of 0.2022, which was achieved in the 164th epoch. This indicates that the climate of the Mandalika International circuit is a very wet climate with the highest rainfall intensity in March and the lowest rainfall intensity in January.

Therefore, the authors advise the government or organizers of WSBK (World Superbike) and MotoGP (Grand Prix Motorcycle) at the Mandalika International Circuit to avoid the high intensity rainfall such as those in the previous events. The authors recommend that these events be held in January or December to avoid slippery tracks and accidents during the races so that the activities may run optimally.

REFERENCES

- [1] Haliza, A.R. (2018). Climate change scenarios in Malaysia: Engaging the public. *International Journal of Malay-Nusantara Studies*, 1(2): 55-77.
- [2] Sari, N.R., Mahmudy, W.F., Wibawa, A.P. (2016). Backpropagation on neural network method for inflation rate forecasting in Indonesia. *International Journal of Advances in Soft Computing and Its Applications*, 8(3): 69-87.
- [3] Siregar, S.P., Wanto, A. (2017). Analysis of artificial neural network accuracy using backpropagation algorithm in predicting process (forecasting). *IJISTECH (International Journal Of Information System & Technology)*, 1(1): 34. <https://doi.org/10.30645/ijistech.v1i1.4>
- [4] Lee, J., Kim, C.G., Lee, J.E., Kim, N.W., Kim, H. (2018). Application of artificial neural networks to rainfall forecasting in the Geum River Basin, Korea. *Water (Switzerland)*, 10(10): 1-14. <https://doi.org/10.3390/w10101448>
- [5] Nogay, H.S., Akinci, T.C., Eidukeviciute, M. (2012). Application of artificial neural networks for short term wind speed forecasting in Mardin, Turkey. *Journal of Energy in Southern Africa*, 23(4): 2-7.
- [6] Nayak, D.R., Mahapatra, A., Mishra, P. (2013). A survey on rainfall prediction using artificial neural network. *Int. J. Comput. Appl.*, 72(16): 32-40. <https://doi.org/https://doi.org/10.5120/12580-9217>
- [7] Abbot, J., Marohasy, J. (2014). Input selection and optimisation for monthly rainfall forecasting in queensland, australia, using artificial neural networks. *Atmospheric Research*, 138: 166-178. <https://doi.org/10.1016/j.atmosres.2013.11.002>
- [8] Chaturvedi, A. (2015). Rainfall prediction using back-propagation feed forward network. *International Journal of Computer Applications*, 119(4): 1-5. <https://doi.org/10.5120/21052-3693>
- [9] Wahyuni, E.G., Fauzan, L.M.F., Abriyani, F., Muchlis, N.F., Ulfa, M. (2018). Rainfall prediction with backpropagation method. *Journal of Physics: Conference Series*, 983(1): 012059. <https://doi.org/10.1088/1742-6596/983/1/012059>
- [10] Sharma, A., Nijhawan, G. (2015). Rainfall prediction using neural network. *International Journal of Computer Science Trends and Technology*, 3(3): 65-69. <http://ijcstjournal.org/Vol3Issue3No1.html>
- [11] Govinda, K., Hiremath, S. (2014). Rainfall prediction using artificial neural network. *International Journal of Applied Engineering Research*, 9(23): 21243-21254. <https://doi.org/10.29244/j.agromet.31.1.11-21>
- [12] Hayat, C., Soenandi, I.A., Limong, S., Kurnia, J. (2020). Modeling of prediction bandwidth density with backpropagation neural network (BPNN) methods. *IOP Conference Series: Materials Science and Engineering*, 852(1). <https://doi.org/10.1088/1757-899X/852/1/012127>
- [13] Jabjone, S. (2013). Artificial neural networks for predicting the rice yield in Phimai district of Thailand. *International Journal of Electrical Energy*, 1(3): 177-181. <https://doi.org/10.12720/ijoe.1.3.177-181>
- [14] Naik, A.R., Pathan, S. (2013). Indian monsoon rainfall classification and prediction using robust back propagation artificial neural network. *International Journal of Emerging Technology and Advanced Engineering*, 3(13): 99-101. <https://doi.org/https://doi.org/10.1007/s00477-013-0695-0>
- [15] Wu, C.F., Wu, Y.J., Liang, P.C., Wu, C.H., Peng, S.F., Chiu, H.W. (2017). Disease-free survival assessment by artificial neural networks for hepatocellular carcinoma patients after radiofrequency ablation. *Journal of the Formosan Medical Association*, 116(10): 765-773. <https://doi.org/10.1016/j.jfma.2016.12.006>
- [16] Wanto, A., Zarlis, M., Sawaluddin, Hartama, D. (2017). Analysis of artificial neural network backpropagation using conjugate gradient fletcher reeves in the predicting process. *Journal of Physics: Conference Series*, 930(1). <https://doi.org/10.1088/1742-6596/930/1/012018>
- [17] Lesnussa, Y.A., Mustamu, C.G., Kondo Lembang, F., Talakua, M.W. (2018). Application of backpropagation neural networks in predicting rainfall data in Ambon city. *International Journal of Artificial Intelligence Research*, 2(2): 1-9. <https://doi.org/10.29099/ijair.v2i2.59>
- [18] Setti, S., Wanto, A. (2019). Analysis of backpropagation algorithm in predicting the most number of internet users in the world. *Jurnal Online Informatika*, 3(2): 110. <https://doi.org/10.15575/join.v3i2.205>
- [19] Pamungkas, A., Zulkarnain, R., Adiyana, K., Waryanto, Nugroho, H., Saragih, A.S. (2020). Application of

Commented [hd4]: 1. Please add 2 references, citing 2 articles in RIA between 2019-2022, which need to be appropriate for this article.
2. If possible, please add 2 references, citing 2 appropriate articles in ATAIML (https://www.acadlore.com/journals/ATAIML/2022_1_1).

- Artificial Neural Networks to forecast *Litopenaeus vannamei* and *Penaeus monodon* harvests in Indramayu Regency, Indonesia. IOP Conference Series: Earth and Environmental Science, 521(1): 1-9. <https://doi.org/10.1088/1755-1315/521/1/012018>
- [20] Kouadri, S., Kateb, S., Zegait, R. (2021). Spatial and temporal model for WQI prediction based on back-propagation neural network, application on EL MERK region (Algerian southeast). Journal of the Saudi Society of Agricultural Sciences, 20(5): 324-336. <https://doi.org/10.1016/j.jssas.2021.03.004>
- [21] Syaharuddin, Pramita, D., Nusantara, T., Subanji. (2020). Computational of distribution of wind speed as preliminary information for fishers: Case study in lombok sea. International Journal of Advanced Trends in Computer Science and Engineering, 9(3): 3584-3587. <https://doi.org/10.30534/ijatcse/2020/165932020>
- [22] Syaharuddin, Pramita, D., Nusantara, T., Subanji. (2021). Forecasting using back propagation with 2-layers hidden. Journal of Physics: Conference Series: 1845: 012030. <https://doi.org/10.1088/1742-6596/1845/1/012030>
- [23] Ojha, V.K., Dutta, P., Chaudhuri, A., Saha, H. (2015). Convergence analysis of backpropagation algorithm for designing an intelligent system for sensing manhole gases. In Hybrid Soft Computing Approaches: Research and Applications, 611: 215-236. https://doi.org/10.1007/978-81-322-2544-7_7
- [24] Bai, Y., Li, Y., Wang, X., Xie, J., Li, C. (2016). Air pollutants concentrations forecasting using back propagation neural network based on wavelet decomposition with meteorological conditions. Atmospheric Pollution Research, 7(3): 557-566. <https://doi.org/10.1016/j.apr.2016.01.004>
- [25] Haviluddin, Alfred, R. (2016). A genetic-based backpropagation neural network for forecasting in time-series data. Proceedings - 2015 International Conference on Science in Information Technology: Big Data Spectrum for Future Information Economy, ICSITech 2015, pp. 158-163. <https://doi.org/10.1109/ICSITech.2015.7407796>
- [26] Ojha, V.K., Abraham, A., Snášel, V. (2017). Metaheuristic design of feedforward neural networks: A review of two decades of research. Engineering Applications of Artificial Intelligence, 60: 97-116. <https://doi.org/10.1016/j.engappai.2017.01.013>
- [27] Mokhtar, S.A., Wan Ishak, W.H., Norwawi, N.M. (2014). Modelling of reservoir water release decision using neural network and temporal pattern of reservoir water level. 2014 5th International Conference on Intelligent Systems, Modelling and Simulation, pp. 127-130. <https://doi.org/10.1109/ISMS.2014.27>
- [28] Syaharuddin, Fatmawati, Suprajitno, H. (2022a). Best architecture recommendations of ANN backpropagation based on combination of learning rate, momentum, and number of hidden layers. JTAM (Jurnal Teori Dan Aplikasi Matematika), 6(3): 629-637. <https://doi.org/https://doi.org/10.31764/jtam.v6i3.8524>
- [29] Hayat, C., Limong, S., Sagala, N. (2019). Architecture of back propagation neural network model for early detection of tendency to Type B personality disorders. Khazanah Informatika: Jurnal Ilmu Komputer Dan Informatika, 5(2): 115-123. <https://doi.org/10.23917/khif.v5i2.7923>
- [30] Syaharuddin, Fatmawati, Suprajitno, H. (2022b). The formula study in determining the best number of neurons in neural network Backpropagation Architecture with Three Hidden Layers. Jurnal RESTI (Rekayasa Sistem Dan Teknologi Informasi), 6(3): 397-402. <https://doi.org/https://doi.org/10.29207/resti.v6i3.4049>

Hasil Review 1



Vera Mandailina <vrmandailina@gmail.com>

about the status of the article

3 pesan

editor.ria iieta.org <editor.ria@iieta.org>

29 Desember 2022 pukul 14.33

Kepada: "vrmandailina@gmail.com" <vrmandailina@gmail.com>

Cc: "atinnurhalimah26@gmail.com" <atinnurhalimah26@gmail.com>, "sababs111@gmail.com"

<sababs111@gmail.com>, "syaharuddin.ntb@gmail.com" <syaharuddin.ntb@gmail.com>, "ibrahimali.geo@gmail.com" <ibrahimali.geo@gmail.com>

Dear author,

We have reached a decision regarding your submission to Revue d'Intelligence Artificielle, " Study of Climate Change in The Mandalika International Circuit Area Using Neural Network Backpropagation".

Our decision is: Revisions Required

1. Revise the current paper according to reviewers' comments. Highlight any change or track changes you make. **Response to reviewers is also required.**
2. Typeset your final paper according to the attached template.

Please return your revised manuscript and the response to reviewers to this e-mail before **1 January 2022**. Thanks for your cooperation.

Best regards,

Editorial Board

Revue d'Intelligence Artificielle

<http://www.iieta.org/Journals/RIA>

published by

International Information and Engineering Technology Association (IIETA)

<http://www.iieta.org/>

2 lampiran **RIA Template.docx**
156K **RIA 17148 comments.docx**
13K

Vera Mandailina <vrmandailina@gmail.com>

30 Desember 2022 pukul 11.13

Kepada: "editor.ria iieta.org" <editor.ria@iieta.org>

Dear RIA Editor

Thank you for reviewing our paper. We will try to revise it properly and return the revision within the specified time.

We also apologize that the previous email on October 31, 2022 was not checked. Because we see the submit account in OJS has not changed to "inreview".

One again, we apologize. We will send you the revision soon.

[Kutipan teks disembunyikan]

Vera Mandailina <vrmandailina@gmail.com>
Kepada: "editor.ria iieta.org" <editor.ria@iieta.org>

1 Januari 2023 pukul 00.04

Dear RIA Editor

We have completed the revisions as per the reviewer's notes. We have highlighted the parts that have been revised. We have also proofread the paper again. We hope this paper can be Accepted.

**Best regards,
Vera Mandailina**

[Kutipan teks disembunyikan]

2 lampiran



RIA 17148 comments.docx

16K



17148-99Z_Article Text-34696-1-2-20220917-Revise.docx

412K

Study of Climate Change in the Mandalika International Circuit Area Using Neural Network Backpropagation

Vera Mandailina^{1*}, Atin Nurhalimah¹, Saba Mehmood², Syaharuddin¹, Ibrahim³

¹ Department of Mathematics Education, Universitas Muhammadiyah Mataram, Mataram, Indonesia

² Department of Mathematics Education, Thal University Bhakkar, Punjab, Pakistan

³ Department of Environmental Engineering, Universitas Muhammadiyah Mataram, Mataram, Indonesia

Corresponding Author Email: vrmandailina@gmail.com

<https://doi.org/10.18280/ria.xxxxxx>

ABSTRACT

Received:

Accepted:

Keywords:

neural network, backpropagation, climate change, schmidt-ferguson classification

Climate change is a global phenomenon that also causes small-scale effects. This study aims to determine future climate changes in the Mandalika International Circuit area using the artificial neural network of the MATLAB GUI-based backpropagation method. The simulation stage used daily rainfall intensity data collected in the Mandalika International Circuit area from 2012-2021 (365 data). A preliminary analysis concluded that the Mandalika International Circuit area is dominated by a very wet climate according to the Schmidt-Ferguson classification, which occurred in 2012, 2013, 2017, and 2021. This study used two architectural models with two and three hidden layers. The TRAINRP training function and the LOGSIG activation function were utilized at each hidden layer. Between the two architectures, the better architecture was selected, namely the 100-50-10-1 (three hidden layers) that resulted in an accuracy rate of 99.90% and an MSE of 0.0412376 achieved in the 258th iteration. These results indicate that the area has a very wet climate with the highest rain intensity in March and the lowest in January. The results of this study show that the backpropagation method can be used to help formulate an alternative policy on the measures for handling and mitigating extreme climate change in upcoming periods, especially during international events at the Mandalika International Circuit area.

1. INTRODUCTION

Indonesia has recently hosted two international racing sports events, namely the WSBK (World Superbike) and MotoGP (Grand Prix Motorcycle) at Mandalika International Circuit. These events are prestigious motor racing sports events at the global level. Mandalika International Circuit is an arena used to hold international racing events located in the Mandalika Special Economic Zone (SEZ). In organizing such events, it is required to make efforts to anticipate climate conditions, especially the intensity of rainfall. According to Haliza et al. [1], climate change can be defined as a change in the state of the climate. This change can be identified, for example by using statistical tests, by changes in the mean or variability of its properties that persist for a long time, usually for decades or longer.

Sari et al. [2] stated that forecasting is an activity to predict what will happen in the future. Siregar and Wanto [3] further elaborated that prediction is a presumption about the occurrence of an event in the future and forecasting is very helpful in planning and policy-making processes both in the government and non-government sectors. Predictive analysis is very important to conduct in a study so that the research becomes more precise and directed. Therefore, a good analysis using tested methods is needed so that the resulting accuracy can be truly accountable. Lee et al. [4] argued that rainfall prediction is essential to prevent floods, manage

water resources, save lives and property, and secure economic activities.

One of the prediction methods widely used by researchers is artificial neural networks (ANN). Nogay et al. [5] stated that artificial neural network technology is one of the latest products of humanity's efforts in the research and imitation of nature. Artificial neural networks are programs designed to simulate the behavior of simple biological nervous systems. An artificial neural network is shaped by structuring a foreseen number of artificial neural cells in a certain architecture to process data. Nayak et al. [6] argued that artificial neural network algorithms have become an attractive inductive approach in rainfall prediction owing to their high nonlinearity, flexibility, and data-driven learning in building models without any prior knowledge about catchment behavior and flow processes. They are successfully used today in various aspects of science and engineering because of their ability to model both linear and non-linear systems without the need to make assumptions as are implicit in most traditional statistical approaches. The neural network has been used as a more effective model than simple linear regression. According to Abbot & Marohasy [7], the main advantage of neural networks lies in their ability to represent linear and non-linear relationships and the ability to learn these relationships directly from the data being modelled. Traditional linear models are inadequate for modeling data containing non-linear characteristics. This is emphasized by Chaturvedi [8] that an artificial neural

network can be used for making predictions as it can examine and determine the historical data used for prediction. NN has a better accuracy than statistical and mathematical models. They work on the principle of biological neurons, which is a type of data-driven technique. The conjunction between meteorological parameters and rainfall can be analyzed using NN. Furthermore, Wahyuni et al. [9] stated that climate change in the world has caused a lot of impacts on changing rainfall patterns. This requires a method that can predict rainfall based on rainfall patterns that occur after climate change. Disasters can be anticipated with accurate information about how much rainfall will fall at a location in a certain period.

One of the important aspects of implementing backpropagation for forecasting rainfall is the change of seasons. According to Sharma & Nijhawan [10] and Govinda & Hiremath [11], backpropagation is the common method for training neural networks. This is a supervised learning method that requires a dataset of the desired output from many inputs, making up the training set and is most useful for the feed-forward network (networks that have no feedback or simply no connection in that loop). Hayat et al. [12] further described that the backpropagation algorithm architecture consists of three layers, namely the input layer, hidden layer, and output layer. At the input layer, there is no computational process, but at this layer, the X signal input occurs at the hidden layer. At the hidden and output layer, the computation process occurs for weight and bias, and the magnitude of the hidden output and output layer is also calculated based on certain activation functions. In this backpropagation algorithm, the binary sigmoid activation function was used because the expected output is between 0 and 1. At the input layer, the input was varied with X_n ; while at the hidden layer there were weight (V_{ij}) and bias (V_{oj}), and Z as the hidden layer data. At the output layer, there are weight (W_{ij}), bias (W_{oj}), and Y as the output data.

The backpropagation method is a method that is quite well known and has been widely applied by previous researchers, including Jabjone [13] who applied artificial neural networks to predict rice yields in Thailand's Phimai District in 2002-2007. The results show that neural networks (8, 19, and 17) provided the lowest value of RMSE of 10.57 and MAPE of 2.3%. Naik & Pathan [14] also presented a modified backpropagation artificial neural network model for classifying and predicting Indian monsoon precipitation. The weather data were collected from the Meteorological Department with 80% of the total data were used for training purposes and 20% for validation purposes. The accuracy of the predictions achieved was between 80% and 90%, thus the neural networks were suitable for predicting precipitation. According to Wu et al. [15], the artificial neural network model can recognize patterns of data through learning process and it has been applied to attain medical decision support. They utilized 15 data inputs with a single hidden layer architecture and obtained an accuracy rate of 85%. Furthermore, Wanto et al. [16] conducted a study to predict the Consumer Price Index (CPI) of the foodstuffs group using the artificial neural network backpropagation and Fletcher Reeves Conjugate Gradient. This study resulted in an accuracy rate of 75% and an MSE of 0.0142803691 using the backpropagation method with architecture of 12-15-1, the best architecture used. Lesnussa et al. [17] also utilized the artificial neural network of backpropagation to predict rainfall in the city of Ambon. This study utilized monthly

rainfall data from 2011 to 2015 with a one-layer hidden 3-12-1 architecture. The results of training and testing data show that the accuracy rate of precipitation prediction obtained was 80% with an alpha of 0.7, an epoch of 10000, and an MSE value of 0.022.

According to Wahyuni et al. [9], based on their research a learning rate of 0.01, an architecture (4-5-3) of 4 inputs, 5 hidden layers, and 3 outputs with a maximum iteration of 1500 and error tolerance of 0.01 obtained the best results at the maximum iteration condition (1500) with an MSE value of 0.342. Setti & Wanto [18] analyzed the prediction of the highest number of internet users in the world using the backpropagation algorithm with a focus on data in 25 countries from 2013-2017. The accuracy result was 92% and the MSE was 0.0015 on the best network architecture of 3-50-1. In another study, Pamungkas et al. [19] applied the backpropagation to predict the production of *Litopenaeus vannamei* and *Penaeus monodon* shrimps in Indramayu Regency, which performed well during training. They recommended the trainGD function as a good training function with the lowest MAPE of 19.28%. Kouadri et al. [20] also evaluated the suitability of groundwater for human consumption and modelled water quality indices, temporally and spatially, using artificial neural networks. A total of 37 samples were harvested from eight different wells in the region throughout 2016 and the model recorded an MSE with an error rate of 9.3%. Syaharuddin et al. [21] applied backpropagation with architecture 144-10-5-1 for wind speed prediction reaching an accuracy rate of 99.9% with a learning rate of 0.7. In another study, Syaharuddin et al. [22] predicted an inflation rate using the backpropagation method and obtained an average yield of 0.213 with an MSE of 0.0053. They utilized a 120-10-5-1 architecture, trainrp as the training function and logsig as the activation function.

The results of these studies show that there have been many studies that apply the backpropagation neural network using two hidden layers. The input data used averaged 3-5 years, learning rate 0.7, and MSE value 0.0001-1.64. Therefore, so far, there is no research that uses backpropagation with three hidden layers and compares the accuracy results with two hidden layers. In addition, the learning rate that the researchers use is too large, where the role of learning rate accelerates the process of training and testing data but will affect the accuracy of the architecture. Therefore, one of the novelties in this research is to add a momentum parameter to the three hidden layer architecture to help reduce the resulting error. Furthermore, in this research we use data for the last 10 years, using a relatively small learning rate. We tested the architecture on a case study of rainfall data in the Mandalika International Circuit area. Hopefully, the prediction results can be used to determine rainfall trends in future and climate change in the region.

2. RESEARCH METHODS

2.1 Data Selection

This study used quantitative data to solve the research problems. The focus of the data used is the daily rainfall time series data in the Mandalika International Circuit area in Indonesia from 1 January 2012 to 31 December 2021 at 8.895oS and 116.306oE.

2.2 Research Procedure

The accuracy parameter used in this forecasting was the Mean Square Error (MSE) and Root Mean Square Error (RMSE) assisted by MATLAB'S Graphical User Interface (GUI). Architectural design used to find the optimal NN configuration is also known as NN structural training, which consists of three NN layers, namely one input layer, one hidden layer, and one output layer. The number of neurons in the input layer and output layer depends on the problem itself [23][24]. This is in line with Haviluddin & Alfred [25], who

stated that the backpropagation network architecture generally consists of three layers, namely the input layer, the hidden layer, and the output layer. Similarly, the proper design of NN offers significant improvements to the learning system. Its components, such as nodes, weights, and layers are responsible for the development of various NN models. Single-layer perceptron (SLP) consists of input and output layers, making it the simplest form of an NN model [26]. The authors formulated and used simple and necessary research procedures for the research, as presented in Figure 1.

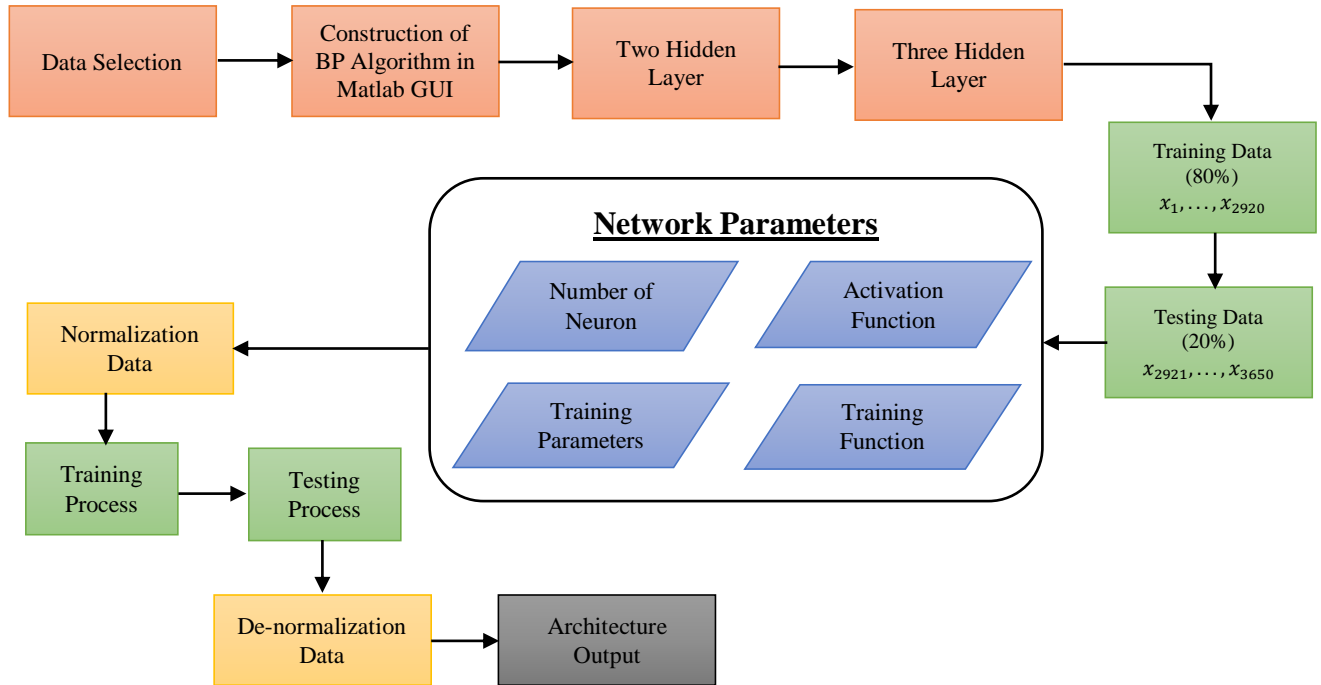


Figure 1. Flowchart of Research

Based on Figure 1, after the data were obtained, the backpropagation algorithm was then determined using the MATLAB GUI. The artificial neural network model of the backpropagation method used to determine patterns was implemented to separate the data that will be used as training data (from 2012 to 2019 or 80%) and testing data (from 2020 to 2021 or 20%). Afterward, the prediction phase used data from 2012 to 2021 to predict rainfall data in 2022 (a 10 year-span). We use Z-score techniques to normalize and de-normalize the data (equation 1). The last stage of interplay and conclusion of the output results were obtained from the MATLAB R2013a GUI, with input results including graphs, epochs, prediction results, MSEs and RMSEs of each datum

$$Z = \frac{x_i - \bar{x}_i}{\sigma} \quad (1)$$

2.3 Neural Network Backpropagation Architecture

Backpropagation architecture consisting of input layer, hidden layer, and output layer was connected by activation and weight functions. Therefore, data prediction y_k can be determined by formula:

$$y_k = f \left(w_{ok} + \sum_{j=1}^p w_{jk} \cdot f \left(v_{oj} + \sum_{i=1}^n v_{ij} \cdot x_i \right) \right) \quad (2)$$

variables $x_1, x_2, \dots, x_i, \dots, x_n$ are an input layer determined by the amount of input data and only one layer, y_1, y_2, \dots, y_k are the output layer as well as one layer. In equation (2), $v_{11}, v_{1j}, \dots, v_{ij}$ are weight matrices that connect the input layer and the hidden layer, while $w_{11}, w_{1k}, \dots, w_{jk}$ are weight matrices that connect the hidden layer and the output layer.

Backpropagation architecture design was used to determine the best architecture with certain parameters through training and testing of previously shared data. In this study, the architectural parameters used were from the NN architecture of the backpropagation method using a learning rate of 0.1 and a momentum of 0.8. Previous research carried out by Mokhtar et al. [27] for data set 2 showed that learning rate of 0.1 and a momentum of 0.8 will generate the best result and the best network architecture achieved was 5-25-1. Syaharuddin et al. [28] in their research also showed that the learning rate value is recommended at intervals of 0.1-0.2 with a RE model value of 0.938 (very high), the momentum value at intervals of 0.7-0.9 with a RE model value of 0.925 (very high), and the number of neurons in the input layer that is smaller than the number of neurons in the hidden layer with a RE model value of 0.932 (very high). Complete information on the network architecture used is as follows

Setting Parameters:

Max. Epoch : 1000
 Error (Goal) : 0.001
 Learning Rate (LR) : 0.1
 Momentum : 0.8
 Show Step : 25
 Activation Function : logsig (layer hidden) and purelin (layer output).
 Training Function : trainrp

Amount of Neuron (2 layers hidden)

Layer Input : 10 years x 365 days (prediction data), 8 years x 365 days (training data), and 2 years x 365 days (testing data)
 Layer hidden-1 : 100
 Layer hidden-2 : 50
 Layer output : 1

Amount of Neuron (3 layers hidden)

Layer Input : 10 years x 365 days (prediction data), 8 years x 365 days (training data), and 2 years x 365 days (testing data)

Layer Hidden-1 : 100
 Layer Hidden-2 : 50
 Layer Hidden-3 : 10
 Layer Output : 1

We set the parameters for the backpropagation architecture at the initial stage or before training and testing data. We use a binary sigmoid (logsig) activation function on each hidden layer according to equation (3).

$$f(x) = \frac{1}{1 + e^{-x}} \quad (3)$$

3. RESULTS AND DISCUSSION

3.1 Preliminary Analysis Results

The input of rainfall data for the Mandalika International Circuit area was obtained daily from 2012 to 2021, so 365 data were obtained for each year. The amount of rainfall (mm) calculated each month is displayed in Table 1.

Table 1. The input of rainfall data for the Mandalika International Circuit from 2012 to 2022

Month	2012	2013	2014	2015	2016	2017	2018	2019	2020	2021
January	158,42	139,12	140,54	125,64	15,18	203,89	173,24	56,6	37,54	290,62
February	112,17	67,84	47,53	11,44	18,57	76,91	87,59	4,33	38,98	55,16
March	110,34	28,81	27,62	10,61	4,71	68,53	32,53	18,67	15,98	79,2
April	86,58	81,24	29,93	28,74	21,13	67,52	45,77	24,27	34,56	64,97
May	178,7	142,23	88,85	23,97	94,87	116,33	114,26	69,01	49,93	132,35
June	272,96	285,29	276,43	211,11	250,58	152,82	164,59	220	234,85	156,38
July	296,17	288,77	281,64	161,29	183,68	264,85	270,96	231,66	211,46	206,95
August	138,32	230,58	152,36	209,63	233,14	219,3	149,25	175,17	180,63	121,11
September	287,1	261,98	202,85	226,52	265,41	202,57	218,53	148,01	228,49	232,83
October	185,04	169,07	148,02	95,01	299,36	281,2	90,99	99,81	361,57	294,08
November	187,25	273,03	146,92	125,23	137,15	196,93	148,86	172,01	190,86	257,18
December	93,46	286,69	204,6	92,42	229,21	328,33	135,99	134,92	248,73	241,48
Q-value	0	0,0909	0,3333	0,5	0,5	0	0,2	0,5	0,714	0,0909
Category	Very wet	Very wet	Rather wet	Rather wet	Rather wet	Very wet	wet	Rather wet	Moderate	Very wet

After calculating the amount of rainfall (mm) per month as seen in Table 1, it was discovered that in 2012, 2013, 2017, and 2021 the comparative value (Q) was $0 < Q < 0.143$, so according to the Schmidt Ferguson Climate classification table, they are categorized as very wet months. Meanwhile, the years 2015, 2016, and 2019 obtained a ratio value of $0.600 < Q < 1,000$ so they fall into the category of months with temperate climate. In 2014, the comparison value was $0.333 < Q < 0.600$, making the months categorized as rather wet climate. However, the year 2020 had a very high comparison value (Q) of 0.714, making the months fall under the category of moderate.

Thus, from the results described above, it can be concluded that based on 10 years of rainfall data, the climate in Mandalika International Circuit area according to the Schmidt-Ferguson climate classification can mostly be categorized as very wet climate, which occurred in 2012, 2013, 2017, and 2021, or the peak of high rainfall. Meanwhile, the climate in 2014 was slightly wet; 2015, 2016, and 2019 were dominated by the medium climate;

2018 was mostly categorized as a wet climate; while 2020 was dominated by the extraordinarily dry climate or the peak of the long dry season occurring in the Mandalika International Circuit area.

3.2 Training, Testing, and Data Prediction Phase

Generally, there are two stages in the prediction process of NN backpropagation, namely the training and testing stages. According to Hayat et al. [29], the training stage uses data to produce results of backpropagation neural network training, while the testing stage implements the weight of NN from the training phase into the testing. In this study, the architectural pattern of the two hidden layers was 100-50-1 with an input layer of 365, a one hidden layer of 100, two hidden layers of 50 and an output layer of 1. Meanwhile, the architectural pattern for the three hidden layers was 100-50-10-1 with an input layer of 365, a one hidden layer of 100, two hidden layers of 50, three hidden layers of 10, and a layer output of 1. Data training and testing results are presented in Table 2.

Table 2. Data Training and Testing Results

Hidden Layer	Stage	Data	Interval	Amount of Data	Iteration	MSE	RMSE
2 Hidden Layers (100-50-1)	Training	8 years (80%)	2012-2019	8 x 365	376	0.0382	0.1954
	Testing	2 years (20%)	2020-2021	2 x 365	37	0.0526	0.2294
3 Hidden Layers (100-50-10-1)	Training	8 years (80%)	2012-2019	8 x 365	133	0.0375	0.1936
	Testing	2 years (20%)	2020-2021	2 x 365	46	0.0502	0.2248

Based on Table 2, the two hidden layers in the training stage obtained an MSE value of 0.0382 and RMSE value of 0.1954 achieved during the 376th epoch. Meanwhile, the testing stage obtained an MSE value of 0.0526 and RMSE value of 0.2294 achieved in the 37th epoch. Furthermore, the three hidden layers in the training stage obtained an MSE value of 0.0375 and RMSE value 0.1936 achieved in the 133rd epoch, and the testing stage obtained an MSE value of

0.0502 and RMSE value 0.2248 achieved in the 46th epoch. The training and testing results show that the architecture with three hidden layers performs well because the MSE and RMSE values are smaller when compared to the architecture with two hidden layers. Then, we strengthen this argument by looking at the pattern of data distribution according to the regression plot can be seen in Figure 2.

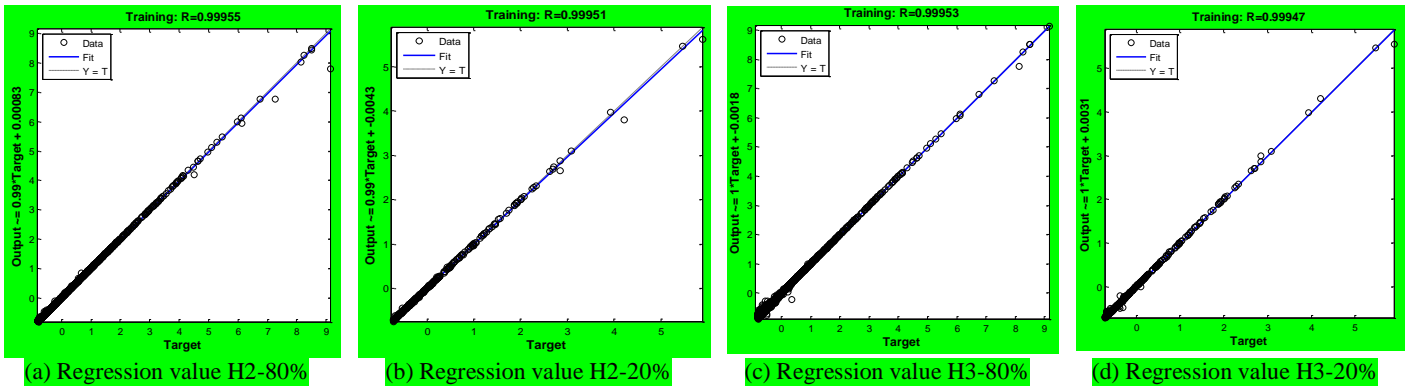


Figure 2. Plot Regression of Training and Testing Data

Based on Figure 2, we can see that the data distribution pattern using the architecture with three hidden layers is better than the architecture with two hidden layers. Then, the

prediction of daily rainfall data in 2022 obtained results as presented in Figures 3 and Figure 4.

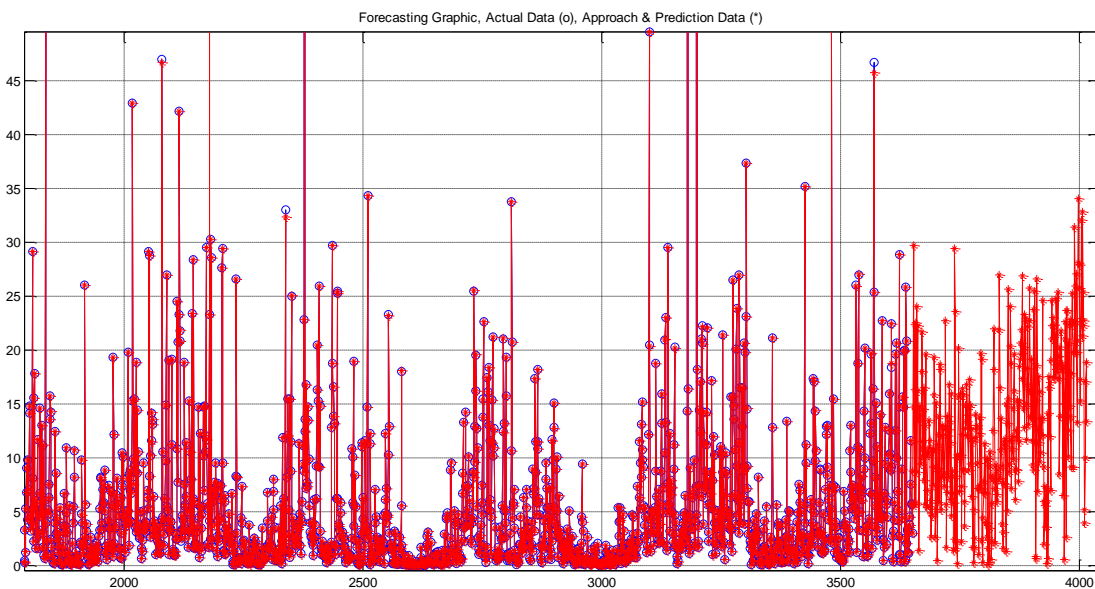


Figure 3. Results of Daily Rainfall Prediction from Actual Data Using Two Hidden Layers

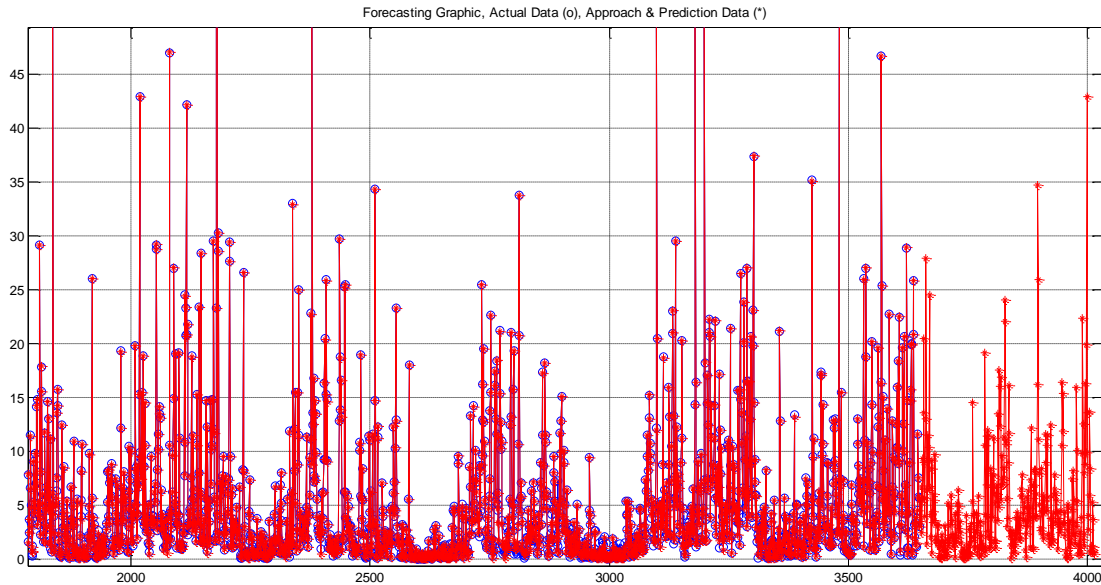


Figure 4. Results of Daily Rainfall Prediction from Actual Data Using Three Hidden Layers

Based on Figure 3, the daily rainfall prediction using two hidden layers to process 10 years (10 x 365 data) obtained an MSE of 0.0417 and RMSE of 0.2047 achieved during the 172th. Meanwhile, the use of three hidden layers as shown in Figure 4 obtained an MSE of 0.0408 and RMSE of 0.2022 achieved during the 164th epoch. Thus, from these two architectural models, it was found that the three hidden layers (100-50-10-1) have predictive results derived from the actual data and can be used for forecasting calculations in future periods; or the MSE and RMSE value of three hidden layers is smaller than that of two hidden layers. This finding is supported by the research of Syaharuddin et al. [30] who

argued that the determination of the best number of neurons on backpropagation using three layers with an architecture of 36-73-37-19-1 showed the highest level of accuracy at the time of precipitation data, obtaining an MSE of 0.0291 and an accuracy rate of 99.94% for data training and 99.99% for data testing.

Network performance can still be improved by increasing training data and replacing parameters that can affect performance such as error goals, epoch size, network architecture, and type of activation function. In the following, the authors present the 2022 rainfall forecasting results using two and three hidden layers, as seen in Table 3.

Table 3. Rainfall Data Prediction for 2022

Month	Forecasting			
	Two Hidden Layers		Three Hidden Layers	
	Rainfall (mm)	Category	Rainfall (mm)	Category
January	520.8002	Wet month	83.9642	Humid month
February	248.2224	Wet month	264.5902	Wet month
March	527.2139	Wet month	406.3721	Wet month
April	320.5872	Wet month	290.0869	Wet month
May	297.8724	Wet month	365.1046	Wet month
June	260.7365	Wet month	245.302	Wet month
July	176.2403	Wet month	257.8995	Wet month
August	199.3703	Wet month	306.0636	Wet month
September	149.3004	Wet month	282.586	Wet month
October	290.3435	Wet month	299.5919	Wet month
November	366.5233	Wet month	283.674	Wet month
December	584.0019	Wet month	97.4145	Humid month
Q-value	0		0	
Category	Very Wet		Very Wet	

Table 3 shows the result of daily to monthly calculation for 2022 rainfall data in the Mandalika International Circuit area. Following the training stage, out of the two architectures, the best architecture resulted was the 100-50-10-1 (three hidden layers), where the very wet climate criteria according to the Schmidt-Ferguson classification would see the highest rainfall intensity in March with rainfall gains of 406.3721 mm and wet month descriptions, while the lowest rainfall intensity would happen in January with rainfall gains of 83.9642, making it classified as a humid month.

After finding out the climate change forecasting results, especially dynamic changes in the rainfall intensity in the Mandalika International Circuit area, the authors recommend the government or the organizers of WSBK (World Superbike) and MotoGP (Grand Prix Motorcycle) to hold these events in December or January. This aims to avoid high rainfall intensity such as those during previous events and to certainly minimize the occurrence of accidents due to slippery tracks during these events.

4. CONCLUSIONS

Based on the Schmidt-Ferguson Criteria Climate Classification, the Mandalika International circuit area was dominated by the very wet climate in 2012, 2013, 2017, and 2021. Meanwhile, in 2014, the climate was moderately wet; 2015, 2016, and 2019 were dominated by the medium climate; 2018 was dominated by the wet climate; while 2020 was dominated by the extraordinary dry climate. The results obtained for two hidden layers in the training stage show an MSE of 0.0382 and RMSE of 0.1954, which was achieved in the 376th epoch, while in the testing stage, the authors obtained an MSE of 0.0526 and RMSE of 0.2294, achieved in the 37th epoch. On the other hand, using the three hidden layers in the training stage, the authors obtained an MSE of 0.0375 and RMSE of 0.1936 achieved during the 133rd epoch, while in the testing stage, the authors obtained an MSE of 0.0502 and RMSE of 0.2248 achieved in the 46th epoch. Furthermore, based on the implementation and testing carried out using the two architectural models, the best architecture obtained was the 100-50-10-1 (three hidden layers) with a "trainrp" training function and "logsig, logsig, logsig, purelin" activation function obtaining a MSE of 0.0408 and RMSE of 0.2022, which was achieved in the 164th epoch. This indicates that the climate of the Mandalika International circuit is a very wet climate with the highest rainfall intensity in March and the lowest rainfall intensity in January.

Therefore, the authors advise the government or organizers of WSBK (World Superbike) and MotoGP (Grand Prix Motorcycle) at the Mandalika International Circuit to avoid the high intensity rainfall such as those in the previous events. The authors recommend that these events be held in January or December to avoid slippery tracks and accidents during the races so that the activities may run optimally.

REFERENCES

- [1] Haliza, A. R. (2018). Climate Change Scenarios in Malaysia: Engaging the Public. *International Journal of Malay-Nusantara Studies*, 1(2), 55–77. <https://journal.unhas.ac.id/index.php/IJoM-NS/article/view/5518>
- [2] Sari, N. R., Mahmudy, W. F., & Wibawa, A. P. (2016). Backpropagation on neural network method for inflation rate forecasting in Indonesia. *International Journal of Advances in Soft Computing and Its Applications*, 8(3), 69–87. <http://www.i-csrs.org/ijasca/>
- [3] Siregar, S. P., & Wanto, A. (2017). Analysis of Artificial Neural Network Accuracy Using Backpropagation Algorithm In Predicting Process (Forecasting). *IJISTECH (International Journal Of Information System & Technology)*, 1(1), 34. <https://doi.org/10.30645/ijistech.v1i1.4>
- [4] Lee, J., Kim, C. G., Lee, J. E., Kim, N. W., & Kim, H. (2018). Application of artificial neural networks to rainfall forecasting in the Geum River Basin, Korea. *Water (Switzerland)*, 10(10), 1–14. <https://doi.org/10.3390/w10101448>
- [5] Nogay, H. S., Akinci, T. C., & Eidukeviciute, M. (2012). Application of artificial neural networks for short term wind speed forecasting in Mardin, Turkey. *Journal of Energy in Southern Africa*, 23(4), 2–7. <https://doi.org/10.17159/2413-3051/2012/v23i4a3173>
- [6] Nayak, D. R., Mahapatra, A., & Mishra, P. (2013). A Survey on Rainfall Prediction using Artificial Neural Network. *Int. J. Comput. Appl.*, 72(16), 32–40. <https://doi.org/https://doi.org/10.5120/12580-9217>
- [7] Abbot, J., & Marohasy, J. (2014). Input selection and optimisation for monthly rainfall forecasting in queensland, australia, using artificial neural networks. *Atmospheric Research*, 138, 166–178. <https://doi.org/10.1016/j.atmosres.2013.11.002>
- [8] Chaturvedi, A. (2015). Rainfall Prediction using Back-Propagation Feed Forward Network. *International Journal of Computer Applications*, 119(4), 1–5. <https://doi.org/10.5120/21052-3693>
- [9] Wahyuni, E. G., Fauzan, L. M. F., Abriyani, F., Muchlis, N. F., & Ulfa, M. (2018). Rainfall prediction with backpropagation method. *Journal of Physics: Conference Series*, 983(1). <https://doi.org/10.1088/1742-6596/983/1/012059>
- [10] Sharma, A., & Nijhawan, G. (2015). Rainfall Prediction Using Neural Network. *International Journal of Computer Science Trends and Technology*, 3(3), 65–69. <http://ijcstjournal.org/Vol3Issue3No1.html>
- [11] Govinda, K., & Hiremath, S. (2014). Rainfall prediction using artificial neural network. *International Journal of Applied Engineering Research*, 9(23), 21243–21254. <https://doi.org/10.29244/j.agromet.31.1.11-21>
- [12] Hayat, C., Soenandi, I. A., Limong, S., & Kurnia, J. (2020). Modeling of prediction bandwidth density with backpropagation neural network (BPNN) methods. *IOP Conference Series: Materials Science and Engineering*, 852(1). <https://doi.org/10.1088/1757-899X/852/1/012127>
- [13] Jabjone, S. (2013). Artificial Neural Networks for Predicting the Rice Yield in Phimai District of Thailand. *International Journal of Electrical Energy*, 1(3), 177–181. <https://doi.org/10.12720/ijoe.1.3.177-181>
- [14] Naik, A. R., & Pathan, S. . (2013). Indian Monsoon Rainfall Classification And Prediction Using Robust Back Propagation Artificial Neural Network. *International Journal of Emerging Technology and Advanced Engineering*, 3(13), 99–101. <https://doi.org/https://doi.org/10.1007/s00477-013-0695-0>
- [15] Wu, C. F., Wu, Y. J., Liang, P. C., Wu, C. H., Peng, S. F., & Chiu, H. W. (2017). Disease-free survival assessment by artificial neural networks for hepatocellular carcinoma patients after radiofrequency ablation. *Journal of the Formosan Medical Association*, 116(10), 765–773. <https://doi.org/10.1016/j.jfma.2016.12.006>
- [16] Wanto, A., Zarlis, M., Sawaluddin, & Hartama, D. (2017). Analysis of Artificial Neural Network Backpropagation Using Conjugate Gradient Fletcher Reeves in the Predicting Process. *Journal of Physics: Conference Series*, 930(1). <https://doi.org/10.1088/1742-6596/930/1/012018>
- [17] Lesnussa, Y. A., Mustamu, C. G., Kondo Lembang, F., & Talakua, M. W. (2018). Application Of Backpropagation Neural Networks In Predicting Rainfall Data In Ambon City. *International Journal of Artificial Intelligence Research*, 2(2), 1–9. <https://doi.org/10.29099/ijair.v2i2.59>
- [18] Setti, S., & Wanto, A. (2019). Analysis of Backpropagation Algorithm in Predicting the Most

- Number of Internet Users in the World. *Jurnal Online Informatika*, 3(2), 110. <https://doi.org/10.15575/join.v3i2.205>
- [19] Pamungkas, A., Zulkarnain, R., Adiyana, K., Waryanto, Nugroho, H., & Saragih, A. S. (2020). Application of Artificial Neural Networks to forecast *Litopenaeus vannamei* and *Penaeus monodon* harvests in Indramayu Regency, Indonesia. *IOP Conference Series: Earth and Environmental Science*, 521(1), 1–9. <https://doi.org/10.1088/1755-1315/521/1/012018>
- [20] Kouadri, S., Kateb, S., & Zegait, R. (2021). Spatial and temporal model for WQI prediction based on back-propagation neural network, application on EL MERK region (Algerian southeast). *Journal of the Saudi Society of Agricultural Sciences*, 20(5), 324–336. <https://doi.org/10.1016/j.jssas.2021.03.004>
- [21] Syaharuddin, Pramita, D., Nusantara, T., & Subanji. (2020). Computational of distribution of wind speed as preliminary information for fishers: Case study in lombok sea. *International Journal of Advanced Trends in Computer Science and Engineering*, 9(3). <https://doi.org/10.30534/ijatcse/2020/165932020>
- [22] Syaharuddin, Pramita, D., Nusantara, T., & Subanji. (2021). Forecasting Using Back Propagation with 2-Layers Hidden. *Journal of Physics: Conference Series*. <https://doi.org/10.1088/1742-6596/1845/1/012030>
- [23] Ojha, V. K., Dutta, P., Chaudhuri, A., & Saha, H. (2015). Convergence analysis of backpropagation algorithm for designing an intelligent system for sensing manhole gases. In *Hybrid Soft Computing Approaches: Research and Applications* (Vol. 611, pp. 215–236). https://doi.org/10.1007/978-81-322-2544-7_7
- [24] Bai, Y., Li, Y., Wang, X., Xie, J., & Li, C. (2016). Air pollutants concentrations forecasting using back propagation neural network based on wavelet decomposition with meteorological conditions. *Atmospheric Pollution Research*, 7(3), 557–566. <https://doi.org/10.1016/j.apr.2016.01.004>
- [25] Havaluddin, & Alfred, R. (2016). A genetic-based backpropagation neural network for forecasting in time-series data. *Proceedings - 2015 International Conference on Science in Information Technology: Big Data Spectrum for Future Information Economy, ICSITech 2015*, 158–163. <https://doi.org/10.1109/ICSITech.2015.7407796>
- [26] Ojha, V. K., Abraham, A., & Snášel, V. (2017). Metaheuristic design of feedforward neural networks: A review of two decades of research. *Engineering Applications of Artificial Intelligence*, 60, 97–116. <https://doi.org/10.1016/j.engappai.2017.01.013>
- [27] Mokhtar, S. A., Wan Ishak, W. H., & Norwawi, N. M. (2014). *Modelling of Reservoir Water Release Decision Using Neural Network and Temporal Pattern of Reservoir Water Level*. 127–130. <https://doi.org/DOI:10.1109/ISMS.2014.27>
- [28] Syaharuddin, Fatmawati, & Suprajitno, H. (2022a). Best Architecture Recommendations of ANN Backpropagation Based on Combination of Learning Rate, Momentum, and Number of Hidden Layers. *JTAM (Jurnal Teori Dan Aplikasi Matematika)*, 6(3), 629–637. <https://doi.org/https://doi.org/10.31764/jtam.v6i3.8524>
- [29] Hayat, C., Limong, S., & Sagala, N. (2019). Architecture of Back Propagation Neural Network Model for Early Detection of Tendency to Type B Personality Disorders. *Khazanah Informatika: Jurnal Ilmu Komputer Dan Informatika*, 5(2), 115–123. <https://doi.org/10.23917/khif.v5i2.7923>
- [30] Syaharuddin, Fatmawati, & Suprajitno, H. (2022b). The Formula Study in Determining the Best Number of Neurons in Neural Network Backpropagation Architecture with Three Hidden Layers. *Jurnal RESTI (Rekayasa Sistem Dan Teknologi Informasi)*, 6(3), 397–402. <https://doi.org/https://doi.org/10.29207/resti.v6i3.4049>

Proof read 2

Study of Climate Change in the Mandalika International Circuit Area Using Neural Network Backpropagation

Vera Mandailina^{1*}, Atin Nurhalimah¹, Saba Mehmood², Syaharuddin¹, Ibrahim³

¹ Department of Mathematics Education, Universitas Muhammadiyah Mataram, Mataram 83115, Indonesia

² Department of Mathematics Education, Thal University Bhakkar, Punjab 30000, Pakistan

³ Department of **Geography Education**, Universitas Muhammadiyah Mataram, Mataram 83115, Indonesia

Corresponding Author Email: vrmandailina@gmail.com

<https://doi.org/10.18280/ria.xxxxxx>

ABSTRACT

Received: 17 September 2022

Accepted: 28 December 2022

Keywords:

neural network, backpropagation, climate change, Schmidt-Ferguson classification

Climate change is a global phenomenon that also causes small-scale effects. This study aims to determine future climate changes in the Mandalika International Circuit area using the artificial neural network of the MATLAB GUI-based backpropagation method. The simulation stage used daily rainfall intensity data collected in the Mandalika International Circuit area from 2012-2021 (365 data). A preliminary analysis concluded that the Mandalika International Circuit area is dominated by a very wet climate according to the Schmidt-Ferguson classification, which occurred in 2012, 2013, 2017, and 2021. This study used two architectural models with two and three hidden layers. The TRAINRP training function and the LOGSIG activation function were utilized at each hidden layer. Between the two architectures, the better architecture was selected, namely the 100-50-10-1 (three hidden layers) that resulted in an accuracy rate of 99.90% and an MSE of 0.0412376 achieved in the 258th iteration. These results indicate that the area has a very wet climate with the highest rain intensity in March and the lowest in January. The results of this study show that the backpropagation method can be used to help formulate an alternative policy on the measures for handling and mitigating extreme climate change in upcoming periods, especially during international events at the Mandalika International Circuit area.

1. INTRODUCTION

Indonesia has recently hosted two international racing sports events, namely the WSBK (World Superbike) and MotoGP (Grand Prix Motorcycle) at Mandalika International Circuit. These events are prestigious motor racing sports events at the global level. Mandalika International Circuit is an arena used to hold international racing events located in the Mandalika Special Economic Zone (SEZ). In organizing such events, it is required to make efforts to anticipate climate conditions, especially the intensity of rainfall. According to Haliza [1], climate change can be defined as a change in the state of the climate. This change can be identified, for example by using statistical tests, by changes in the mean or variability of its properties that persist for a long time, usually for decades or longer.

Sari et al. [2] stated that forecasting is an activity to predict what will happen in the future. Siregar and Wanto [3] further elaborated that prediction is a presumption about the occurrence of an event in the future and forecasting is very helpful in planning and policy-making processes both in the government and non-government sectors. Predictive analysis is very important to conduct in a study so that the research becomes more precise and directed. Therefore, a good analysis using tested methods is needed so that the resulting accuracy can be truly accountable. Lee et al. [4] argued that rainfall prediction is essential to prevent floods, manage water resources, save lives and property, and secure economic activities.

One of the prediction methods widely used by researchers is artificial neural networks (ANN). Nogay et al. [5] stated that artificial neural network technology is one of the latest products of humanity's efforts in the research and imitation of nature. Artificial neural networks are programs designed to simulate the behavior of simple biological nervous systems. An artificial neural network is shaped by structuring a foreseen number of artificial neural cells in a certain architecture to process data. Nayak et al. [6] argued that artificial neural network algorithms have become an attractive inductive approach in rainfall prediction owing to their high nonlinearity, flexibility, and data-driven learning in building models without any prior knowledge about catchment behavior and flow processes. They are successfully used today in various aspects of science and engineering because of their ability to model both linear and non-linear systems without the need to make assumptions as are implicit in most traditional statistical approaches. The neural network has been used as a more effective model than simple linear regression. According to Abbot and Marohasy [7], the main advantage of neural networks lies in their ability to represent linear and non-linear relationships and the ability to learn these relationships directly from the data being modelled. Traditional linear models are inadequate for modeling data containing non-linear characteristics. This is emphasized by Chaturvedi [8] that an artificial neural network can be used for making predictions as it can examine and determine the historical data used for prediction. NN has a better accuracy than statistical and mathematical models. They work on the principle of biological

neurons, which is a type of data-driven technique. The conjunction between meteorological parameters and rainfall can be analyzed using NN. Furthermore, Wahyuni et al. [9] stated that climate change in the world has caused a lot of impacts on changing rainfall patterns. This requires a method that can predict rainfall based on rainfall patterns that occur after climate change. Disasters can be anticipated with accurate information about how much rainfall will fall at a location in a certain period.

One of the important aspects of implementing backpropagation for forecasting rainfall is the change of seasons. According to Sharma and Nijhawan [10] and Govinda and Hiremath [11], backpropagation is the common method for training neural networks. This is a supervised learning method that requires a dataset of the desired output from many inputs, making up the training set and is most useful for the feed-forward network (networks that have no feedback or simply no connection in that loop). Hayat et al. [12] further described that the backpropagation algorithm architecture consists of three layers, namely the input layer, hidden layer, and output layer. At the input layer, there is no computational process, but at this layer, the X signal input occurs at the hidden layer. At the hidden and output layer, the computation process occurs for weight and bias, and the magnitude of the hidden output and output layer is also calculated based on certain activation functions. In this backpropagation algorithm, the binary sigmoid activation function was used because the expected output is between 0 and 1. At the input layer, the input was varied with X_n ; while at the hidden layer there were weight (V_{ij}) and bias (V_{oj}), and Z as the hidden layer data. At the output layer, there are weight (W_{ij}), bias (W_{oj}), and Y as the output data.

The backpropagation method is a method that is quite well known and has been widely applied by previous researchers, including Jabjone [13] who applied artificial neural networks to predict rice yields in Thailand's Phimai District in 2002-2007. The results show that neural networks (8, 19, and 17) provided the lowest value of RMSE of 10.57 and MAPE of 2.3%. Naik and Pathan [14] also presented a modified backpropagation artificial neural network model for classifying and predicting Indian monsoon precipitation. The weather data were collected from the Meteorological Department with 80% of the total data were used for training purposes and 20% for validation purposes. The accuracy of the predictions achieved was between 80% and 90%, thus the neural networks were suitable for predicting precipitation. Lou [15] also utilized backpropagation to determine the competitiveness evaluation of tourist attractions, with an accuracy rate of 97.3%.

According to Wu et al. [16], the artificial neural network model can recognize patterns of data through learning process and it has been applied to attain medical decision support. They utilized 15 data inputs with a single hidden layer architecture and obtained an accuracy rate of 85%. Furthermore, Wanto et al. [17] conducted a study to predict the Consumer Price Index (CPI) of the foodstuffs group using the artificial neural network backpropagation and Fletcher-Reeves conjugate gradient. This study resulted in an accuracy rate of 75% and an MSE of 0.0142803691 using the backpropagation method with architecture of 12-15-1, the best architecture used. Lesnussa et al. [18] also utilized the artificial neural network of backpropagation to predict rainfall in the city of Ambon. This study utilized monthly rainfall data from 2011 to 2015

with a one-layer hidden 3-12-1 architecture. The results of training and testing data show that the accuracy rate of precipitation prediction obtained was 80% with an alpha of 0.7, an epoch of 10000, and an MSE value of 0.022.

According to Wahyuni et al. [9], based on their research a learning rate of 0.01, an architecture (4-5-3) of 4 inputs, 5 hidden layers, and 3 outputs with a maximum iteration of 1500 and error tolerance of 0.01 obtained the best results at the maximum iteration condition (1500) with an MSE value of 0.342. Setti and Wanto [19] analyzed the prediction of the highest number of internet users in the world using the backpropagation algorithm with a focus on data in 25 countries from 2013-2017. The accuracy result was 92% and the MSE was 0.0015 on the best network architecture of 3-50-1. In another study, Pamungkas et al. [20] applied the backpropagation to predict the production of *Litopenaeus vannamei* and *Penaeus monodon* shrimps in Indramayu Regency, which performed well during training. They recommended the trainGD function as a good training function with the lowest MAPE of 19.28%. Kouadri et al. [21] also evaluated the suitability of groundwater for human consumption and modelled water quality indices, temporally and spatially, using artificial neural networks. A total of 37 samples were harvested from eight different wells in the region throughout 2016 and the model recorded an MSE with an error rate of 9.3%. Syharuddin et al. [22] applied backpropagation with architecture 144-10-5-1 for wind speed prediction reaching an accuracy rate of 99.9% with a learning rate of 0.7. In another study, Syharuddin et al. [23] predicted an inflation rate using the backpropagation method and obtained an average yield of 0.213 with an MSE of 0.0053. They utilized a 120-10-5-1 architecture, trainrp as the training function and logsig as the activation function. The researchers utilized a combination of parameters to reduce the error rate of the architecture especially during training, testing, and prediction of data [24].

The results of these studies show that there have been many studies that apply the backpropagation neural network using two hidden layers. The input data used averaged 3-5 years, learning rate 0.7, and MSE value 0.0001-1.64. Therefore, so far, there is no research that uses backpropagation with three hidden layers and compares the accuracy results with two hidden layers. In addition, the learning rate that the researchers use is too large, where the role of learning rate accelerates the process of training and testing data but will affect the accuracy of the architecture. Therefore, one of the novelties in this research is to add a momentum parameter to the three hidden layer architecture to help reduce the resulting error. Furthermore, in this research we use data for the last 10 years, using a relatively small learning rate. We tested the architecture on a case study of rainfall data in the Mandalika International Circuit area. Hopefully, the prediction results can be used to determine rainfall trends in future and climate change in the region.

2. RESEARCH METHODS

2.1 Data selection

This study used quantitative data to solve the research problems. The focus of the data used is the daily rainfall time series data in the Mandalika International Circuit area in

2.2 Research procedure

The accuracy parameter used in this forecasting was the Mean Square Error (MSE) and Root Mean Square Error (RMSE) assisted by MATLAB'S Graphical User Interface (GUI). Architectural design used to find the optimal NN configuration is also known as NN structural training, which consists of three NN layers, namely one input layer, one hidden layer, and one output layer. The number of neurons in the input layer and output layer depends on the problem itself [25, 26]. This is in line with Haviluddin and Alfred [27], who stated that the backpropagation network architecture generally consists of three layers, namely the input layer, the hidden layer, and the output layer. Similarly, the proper design of NN offers significant improvements to the learning system. Its components, such as nodes, weights, and layers are responsible for the development of various NN models. Single-layer perceptron (SLP) consists of input and output layers, making it the simplest form of an NN model [28]. The authors formulated and used simple and necessary research procedures for the research, as presented in Figure 1.

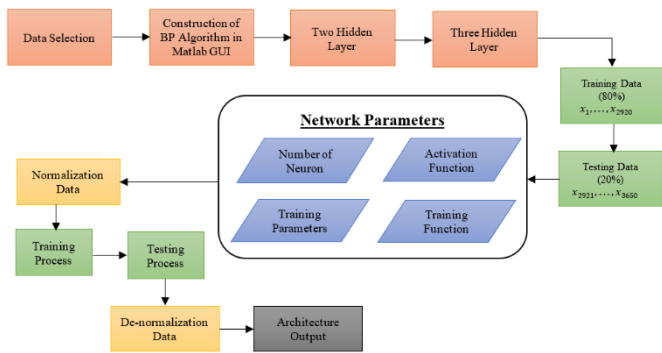


Figure 1. Flowchart of research

Based on Figure 1, after the data were obtained, the backpropagation algorithm was then determined using the MATLAB GUI. The artificial neural network model of the backpropagation method used to determine patterns was implemented to separate the data that will be used as training data (from 2012 to 2019 or 80%) and testing data (from 2020 to 2021 or 20%). Afterward, the prediction phase used data from 2012 to 2021 to predict rainfall data in 2022 (a 10 year-span). We use Z-score techniques to normalize and de-normalize the data (equation 1). The last stage of interplay and conclusion of the output results were obtained from the MATLAB R2013a GUI, with input results including graphs, epochs, prediction results, MSEs and RMSEs of each datum

$$Z = \frac{x_i - \bar{x}_i}{\sigma} \quad (1)$$

2.3 Neural network backpropagation architecture

Backpropagation architecture consisting of input layer, hidden layer, and output layer was connected by activation and weight functions. Therefore, data prediction y_k can be determined by formula:

$$y_k = f\left(w_{0k} + \sum_{j=1}^p w_{jk} \cdot f\left(v_{0j} + \sum_{i=1}^n v_{ij} \cdot x_i\right)\right) \quad (2)$$

variables $x_1, x_2, \dots, x_i, \dots, x_n$ are an input layer determined by the amount of input data and only one layer, y_1, y_2, \dots, y_k are the output layer as well as one layer. In Eq. (2), $v_{11}, v_{1j}, \dots, v_{ij}$ are weight matrices that connect the input layer and the hidden layer, while $w_{11}, w_{1k}, \dots, w_{jk}$ are weight matrices that connect the hidden layer and the output layer.

Backpropagation architecture design was used to determine the best architecture with certain parameters through training and testing of previously shared data. In this study, the architectural parameters used were from the NN architecture of the backpropagation method using a learning rate of 0.1 and a momentum of 0.8. Previous research carried out by Mokhtar et al. [29] for data set 2 showed that learning rate of 0.1 and a momentum of 0.8 will generate the best result and the best network architecture achieved was 5-25-1. Syaharuddin et al. [30] in their research also showed that the learning rate value is recommended at intervals of 0.1-0.2 with a RE model value of 0.938 (very high), the momentum value at intervals of 0.7-0.9 with a RE model value of 0.925 (very high), and the number of neurons in the input layer that is smaller than the number of neurons in the hidden layer with a RE model value of 0.932 (very high). Complete information on the network architecture used is as follows

Setting Parameters:

Max. Epoch	: 1000
Error (Goal)	: 0.001
Learning Rate (LR)	: 0.1
Momentum	: 0.8
Show Step	: 25
Activation Function	: logsig (layer hidden) and purelin (layer output).
Training Function	: trainrp

Amount of Neuron (2 layers hidden)

Layer Input	: 10 years x 365 days (prediction data), 8 years x 365 days (training data), and 2 years x 365 days (testing data)
-------------	--

Layer hidden-1	: 100
Layer hidden-2	: 50
Layer output	: 1

Amount of Neuron (3 layers hidden)

Layer Input	: 10 years x 365 days (prediction data), 8 years x 365 days (training data), and 2 years x 365 days (testing data)
-------------	--

Layer Hidden-1	: 100
Layer Hidden-2	: 50
Layer Hidden-3	: 10
Layer Output	: 1

We set the parameters for the backpropagation architecture at the initial stage or before training and testing data. We use a binary sigmoid (logsig) activation function on each hidden layer according to Eq. (3).

$$f(x) = \frac{1}{1 + e^{-x}} \quad (3)$$

3. RESULTS AND DISCUSSION

3.1 Preliminary analysis results

The input of rainfall data for the Mandalika International Circuit area was obtained daily from 2012 to 2021, so 365 data were obtained for each year. The amount of rainfall (mm) calculated each month is displayed in Table 1.

Table 1. The input of rainfall data for the Mandalika International Circuit from 2012 to 2022

Month	2012	2013	2014	2015	2016	2017	2018	2019	2020	2021
January	158,42	139,12	140,54	125,64	15,18	203,89	173,24	56,6	37,54	290,62
February	112,17	67,84	47,53	11,44	18,57	76,91	87,59	4,33	38,98	55,16
March	110,34	28,81	27,62	10,61	4,71	68,53	32,53	18,67	15,98	79,2
April	86,58	81,24	29,93	28,74	21,13	67,52	45,77	24,27	34,56	64,97
May	178,7	142,23	88,85	23,97	94,87	116,33	114,26	69,01	49,93	132,35
June	272,96	285,29	276,43	211,11	250,58	152,82	164,59	220	234,85	156,38
July	296,17	288,77	281,64	161,29	183,68	264,85	270,96	231,66	211,46	206,95
August	138,32	230,58	152,36	209,63	233,14	219,3	149,25	175,17	180,63	121,11
September	287,1	261,98	202,85	226,52	265,41	202,57	218,53	148,01	228,49	232,83
October	185,04	169,07	148,02	95,01	299,36	281,2	90,99	99,81	361,57	294,08
November	187,25	273,03	146,92	125,23	137,15	196,93	148,86	172,01	190,86	257,18
December	93,46	286,69	204,6	92,42	229,21	328,33	135,99	134,92	248,73	241,48
Q-value	0	0,0909	0,3333	0,5	0,5	0	0,2	0,5	0,714	0,0909
Category	Very wet	Very wet	Rather wet	Rather wet	Rather wet	Very wet	wet	Rather wet	Moderate	Very wet

Table 2. Data training and testing results

Hidden layer	Stage	Data	Interval	Amount of data	Iteration	MSE	RMSE
2 Hidden Layers (100-50-1)	Training	8 years (80%)	2012-2019	8 x 365	376	0.0382	0.1954
	Testing	2 years (20%)	2020-2021	2 x 365	37	0.0526	0.2294
3 Hidden Layers (100-50-10-1)	Training	8 years (80%)	2012-2019	8 x 365	133	0.0375	0.1936
	Testing	2 years (20%)	2020-2021	2 x 365	46	0.0502	0.2248

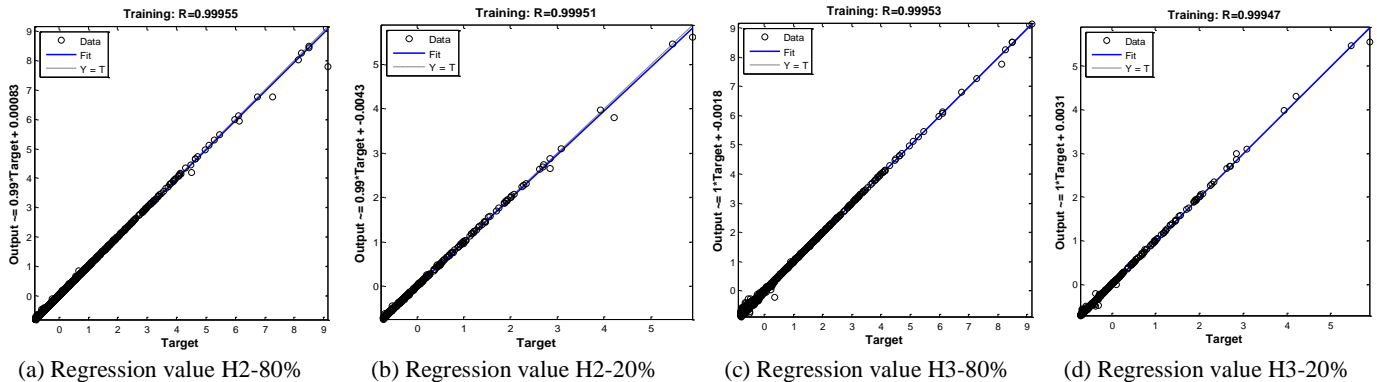


Figure 2. Plot regression of training and testing data

After calculating the amount of rainfall (mm) per month as seen in Table 1, it was discovered that in 2012, 2013, 2017, and 2021 the comparative value (Q) was $0 < Q < 0.143$, so according to the Schmidt Ferguson Climate classification table, they are categorized as very wet months. Meanwhile, the years 2015, 2016, and 2019 obtained a ratio value of $0.600 < Q < 1,000$ so they fall into the category of months with temperate climate. In 2014, the comparison value was $0.333 < Q < 0.600$, making the months categorized as rather wet climate. However, the year 2020 had a very high comparison value (Q) of 0.714, making the months fall under the category of moderate.

Thus, from the results described above, it can be concluded that based on 10 years of rainfall data, the climate in Mandalika International Circuit area according to the Schmidt-Ferguson climate classification can mostly be categorized as very wet climate, which occurred in 2012, 2013, 2017, and 2021, or the peak of high rainfall. Meanwhile, the climate in

2014 was slightly wet; 2015, 2016, and 2019 were dominated by the medium climate; 2018 was mostly categorized as a wet climate; while 2020 was dominated by the extraordinarily dry climate or the peak of the long dry season occurring in the Mandalika International Circuit area.

3.2 Training, testing, and data prediction phase

Generally, there are two stages in the prediction process of NN backpropagation, namely the training and testing stages. According to Hayat et al. [31], the training stage uses data to produce results of backpropagation neural network training, while the testing stage implements the weight of NN from the training phase into the testing. In this study, the architectural pattern of the two hidden layers was 100-50-1 with an input layer of 365, a one hidden layer of 100, two hidden layers of 50 and an output layer of 1. Meanwhile, the architectural pattern for the three hidden layers was 100-50-10-1 with an

input layer of 365, a one hidden layer of 100, two hidden layers of 50, three hidden layers of 10, and a layer output of 1. Data training and testing results are presented in Table 2.

Based on Table 2, the two hidden layers in the training stage obtained an MSE value of 0.0382 and RMSE value of 0.1954 achieved during the 376th epoch. Meanwhile, the testing stage obtained an MSE value of 0.0526 and RMSE value of 0.2294 achieved in the 37th epoch. Furthermore, the three hidden layers in the training stage obtained an MSE value of 0.0375 and RMSE value 0.1936 achieved in the 133rd epoch, and the testing stage obtained an MSE value of 0.0502 and RMSE value 0.2248 achieved in the 46th epoch. The training and testing results show that the architecture with three hidden layers performs well because the MSE and RMSE values are smaller when compared to the architecture with two hidden layers. Then, we strengthen this argument by looking at the pattern of data distribution according to the regression plot can be seen in Figure 2.

Based on Figure 2, we can see that the data distribution pattern using the architecture with three hidden layers is better than the architecture with two hidden layers. Then, the prediction of daily rainfall data in 2022 obtained results as presented in Figures 3 and Figure 4.

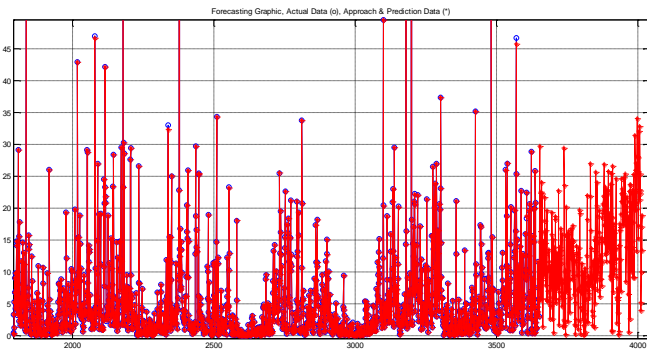


Figure 3. Results of daily rainfall prediction from actual data using two hidden layers

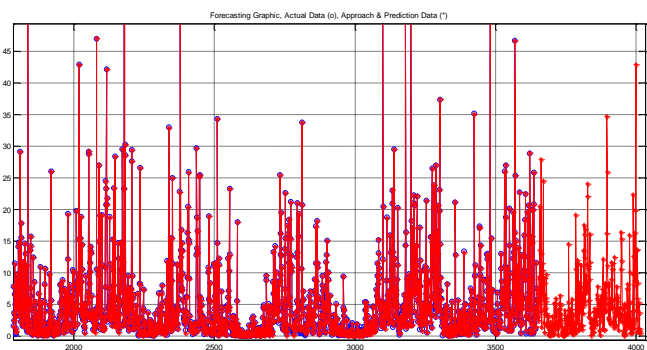


Table 3. Rainfall data prediction for 2022

Month	Forecasting			
	Two Hidden Layers		Three Hidden Layers	
	Rainfall (mm)	Category	Rainfall (mm)	Category
January	520.8002	Wet month	83.9642	Humid month
February	248.2224	Wet month	264.5902	Wet month
March	527.2139	Wet month	406.3721	Wet month
April	320.5872	Wet month	290.0869	Wet month
May	297.8724	Wet month	365.1046	Wet month
June	260.7365	Wet month	245.302	Wet month
July	176.2403	Wet month	257.8995	Wet month
August	199.3703	Wet month	306.0636	Wet month
September	149.3004	Wet month	282.586	Wet month

Figure 4. Results of daily rainfall prediction from actual data using three hidden layers

Based on Figure 3, the daily rainfall prediction using two hidden layers to process 10 years (10 x 365 data) obtained an MSE of 0.0417 and RMSE of 0.2047 achieved during the 172th. Meanwhile, the use of three hidden layers as shown in Figure 4 obtained an MSE of 0.0408 and RMSE of 0.2022 achieved during the 164th epoch. Thus, from these two architectural models, it was found that the three hidden layers (100-50-10-1) have predictive results derived from the actual data and can be used for forecasting calculations in future periods; or the MSE and RMSE value of three hidden layers is smaller than that of two hidden layers. This finding is supported by the research of Syaharuddin et al. [32] who argued that the determination of the best number of neurons on backpropagation using three layers with an architecture of 36-73-37-19-1 showed the highest level of accuracy at the time of precipitation data, obtaining an MSE of 0.0291 and an accuracy rate of 99.94% for data training and 99.99% for data testing.

Network performance can still be improved by increasing training data and replacing parameters that can affect performance such as error goals, epoch size, network architecture, and type of activation function. In the following, the authors present the 2022 rainfall forecasting results using two and three hidden layers, as seen in Table 3.

Table 3 shows the result of daily to monthly calculation for 2022 rainfall data in the Mandalika International Circuit area. Following the training stage, out of the two architectures, the best architecture resulted was the 100-50-10-1 (three hidden layers), where the very wet climate criteria according to the Schmidt-Ferguson classification would see the highest rainfall intensity in March with rainfall gains of 406.3721 mm and wet month descriptions, while the lowest rainfall intensity would happen in January with rainfall gains of 83.9642, making it classified as a humid month.

After finding out the climate change forecasting results, especially dynamic changes in the rainfall intensity in the Mandalika International Circuit area, the authors recommend the government or the organizers of WSBK (World Superbike) and MotoGP (Grand Prix Motorcycle) to hold these events in December or January. This aims to avoid high rainfall intensity such as those during previous events and to certainly minimize the occurrence of accidents due to slippery tracks during these events.

October	290.3435	Wet month	299.5919	Wet month
November	366.5233	Wet month	283.674	Wet month
December	584.0019	Wet month	97.4145	Humid month
Q-value	0		0	
Category	Very Wet		Very Wet	

4. CONCLUSIONS

Based on the Schmidt-Ferguson Criteria Climate Classification, the Mandalika International circuit area was dominated by the very wet climate in 2012, 2013, 2017, and 2021. Meanwhile, in 2014, the climate was moderately wet; 2015, 2016, and 2019 were dominated by the medium climate; 2018 was dominated by the wet climate; while 2020 was dominated by the extraordinary dry climate. The results obtained for two hidden layers in the training stage show an MSE of 0.0382 and RMSE of 0.1954, which was achieved in the 376th epoch, while in the testing stage, the authors obtained an MSE of 0.0526 and RMSE of 0.2294, achieved in the 37th epoch. On the other hand, using the three hidden layers in the training stage, the authors obtained an MSE of 0.0375 and RMSE of 0.1936 achieved during the 133rd epoch, while in the testing stage, the authors obtained an MSE of 0.0502 and RMSE of 0.2248 achieved in the 46th epoch. Furthermore, based on the implementation and testing carried out using the two architectural models, the best architecture obtained was the 100-50-10-1 (three hidden layers) with a "trainrp" training function and "logsig, logsig, logsig, purelin" activation function obtaining a MSE of 0.0408 and RMSE of 0.2022, which was achieved in the 164th epoch. This indicates that the climate of the Mandalika International circuit is a very wet climate with the highest rainfall intensity in March and the lowest rainfall intensity in January.

Therefore, the authors advise the government or organizers of WSBK (World Superbike) and MotoGP (Grand Prix Motorcycle) at the Mandalika International Circuit to avoid the high intensity rainfall such as those in the previous events. The authors recommend that these events be held in January or December to avoid slippery tracks and accidents during the races so that the activities may run optimally.

REFERENCES

- [1] Haliza, A.R. (2018). Climate change scenarios in Malaysia: Engaging the public. *International Journal of Malay-Nusantara Studies*, 1(2): 55-77.
- [2] Sari, N.R., Mahmudy, W.F., Wibawa, A.P. (2016). Backpropagation on neural network method for inflation rate forecasting in Indonesia. *International Journal of Advances in Soft Computing and Its Applications*, 8(3): 69-87.
- [3] Siregar, S.P., Wanto, A. (2017). Analysis of artificial neural network accuracy using backpropagation algorithm in predicting process (forecasting). *IJISTECH (International Journal Of Information System & Technology)*, 1(1): 34. <https://doi.org/10.30645/ijistech.v1i1.4>
- [4] Lee, J., Kim, C.G., Lee, J.E., Kim, N.W., Kim, H. (2018). Application of artificial neural networks to rainfall forecasting in the Geum River Basin, Korea. *Water (Switzerland)*, 10(10): 1-14. <https://doi.org/10.3390/w10101448>
- [5] Nogay, H.S., Akinci, T.C., Eidukeviciute, M. (2012). Application of artificial neural networks for short term wind speed forecasting in Mardin, Turkey. *Journal of Energy in Southern Africa*, 23(4): 2-7.
- [6] Nayak, D.R., Mahapatra, A., Mishra, P. (2013). A survey on rainfall prediction using artificial neural network. *Int. J. Comput. Appl*, 72(16): 32-40. <https://doi.org/https://doi.org/10.5120/12580-9217>
- [7] Abbot, J., Marohasy, J. (2014). Input selection and optimisation for monthly rainfall forecasting in queensland, australia, using artificial neural networks. *Atmospheric Research*, 138: 166-178. <https://doi.org/10.1016/j.atmosres.2013.11.002>
- [8] Chaturvedi, A. (2015). Rainfall prediction using back-propagation feed forward network. *International Journal of Computer Applications*, 119(4): 1-5. <https://doi.org/10.5120/21052-3693>
- [9] Wahyuni, E.G., Fauzan, L.M.F., Abriyani, F., Muchlis, N.F., Ulfa, M. (2018). Rainfall prediction with backpropagation method. *Journal of Physics: Conference Series*, 983(1): 012059. <https://doi.org/10.1088/1742-6596/983/1/012059>
- [10] Sharma, A., Nijhawan, G. (2015). Rainfall prediction using neural network. *International Journal of Computer Science Trends and Technology*, 3(3): 65-69. <http://ijcstjournal.org/Vol3Issue3No1.html>
- [11] Govinda, K., Hiremath, S. (2014). Rainfall prediction using artificial neural network. *International Journal of Applied Engineering Research*, 9(23): 21243-21254. <https://doi.org/10.29244/j.agromet.31.1.11-21>
- [12] Hayat, C., Soenandi, I.A., Limong, S., Kurnia, J. (2020). Modeling of prediction bandwidth density with backpropagation neural network (BPNN) methods. *IOP Conference Series: Materials Science and Engineering*, 852(1). <https://doi.org/10.1088/1757-899X/852/1/012127>
- [13] Jabjone, S. (2013). Artificial neural networks for predicting the rice yield in Phimai district of Thailand. *International Journal of Electrical Energy*, 1(3): 177-181. <https://doi.org/10.12720/ijoe.1.3.177-181>
- [14] Naik, A.R., Pathan, S. (2013). Indian monsoon rainfall classification and prediction using robust back propagation artificial neural network. *International Journal of Emerging Technology and Advanced Engineering*, 3(13): 99-101. <https://doi.org/https://doi.org/10.1007/s00477-013-0695-0>
- [15] Lou B.N., Chen, N., Ma, L. (2020). Competitiveness evaluation of tourist attractions based on artificial neural network. *Revue d'Intelligence Artificielle*, 34(5): 623-630. <https://doi.org/10.18280/ria.340513>
- [16] Wu, C.F., Wu, Y.J., Liang, P.C., Wu, C.H., Peng, S.F., Chiu, H.W. (2017). Disease-free survival assessment by artificial neural networks for hepatocellular carcinoma patients after radiofrequency ablation. *Journal of the Formosan Medical Association*, 116(10): 765-773. <https://doi.org/10.1016/j.jfma.2016.12.006>

- [17] Wanto, A., Zarlis, M., Sawaluddin, Hartama, D. (2017). Analysis of artificial neural network backpropagation using conjugate gradient fletcher reeves in the predicting process. *Journal of Physics: Conference Series*, 930(1). <https://doi.org/10.1088/1742-6596/930/1/012018>
- [18] Lesnussa, Y.A., Mustamu, C.G., Kondo Lembang, F., Talakua, M.W. (2018). Application of backpropagation neural networks in predicting rainfall data in Ambon city. *International Journal of Artificial Intelligence Research*, 2(2): 1-9. <https://doi.org/10.29099/ijair.v2i2.59>
- [19] Setti, S., Wanto, A. (2019). Analysis of backpropagation algorithm in predicting the most number of internet users in the world. *Jurnal Online Informatika*, 3(2): 110. <https://doi.org/10.15575/join.v3i2.205>
- [20] Pamungkas, A., Zulkarnain, R., Adiyana, K., Waryanto, Nugroho, H., Saragih, A.S. (2020). Application of Artificial Neural Networks to forecast *Litopenaeus vannamei* and *Penaeus monodon* harvests in Indramayu Regency, Indonesia. *IOP Conference Series: Earth and Environmental Science*, 521(1): 1-9. <https://doi.org/10.1088/1755-1315/521/1/012018>
- [21] Kouadri, S., Kateb, S., Zegait, R. (2021). Spatial and temporal model for WQI prediction based on backpropagation neural network, application on EL MERK region (Algerian southeast). *Journal of the Saudi Society of Agricultural Sciences*, 20(5): 324-336. <https://doi.org/10.1016/j.jssas.2021.03.004>
- [22] Syaharuddin, Pramita, D., Nusantara, T., Subanji. (2020). Computational of distribution of wind speed as preliminary information for fishers: Case study in lombok sea. *International Journal of Advanced Trends in Computer Science and Engineering*, 9(3): 3584-3587. <https://doi.org/10.30534/ijatcse/2020/165932020>
- [23] Syaharuddin, Pramita, D., Nusantara, T., Subanji. (2021). Forecasting using back propagation with 2-layers hidden. *Journal of Physics: Conference Series*: 1845: 012030. <https://doi.org/10.1088/1742-6596/1845/1/012030>
- [24] Challa, R.K., Rao, K.S. (2022). An effective optimization of time and cost estimation for prefabrication construction management using artificial neural networks. *Revue d'Intelligence Artificielle*, 36(1): 115-123. <https://doi.org/10.18280/ria.360113>
- [25] Ojha, V.K., Dutta, P., Chaudhuri, A., Saha, H. (2015). Convergence analysis of backpropagation algorithm for designing an intelligent system for sensing manhole gases. In *Hybrid Soft Computing Approaches: Research and Applications*, 611: 215-236. https://doi.org/10.1007/978-81-322-2544-7_7
- [26] Bai, Y., Li, Y., Wang, X., Xie, J., Li, C. (2016). Air pollutants concentrations forecasting using back propagation neural network based on wavelet decomposition with meteorological conditions. *Atmospheric Pollution Research*, 7(3): 557-566. <https://doi.org/10.1016/j.apr.2016.01.004>
- [27] Haviluddin, Alfred, R. (2016). A genetic-based backpropagation neural network for forecasting in time-series data. *Proceedings - 2015 International Conference on Science in Information Technology: Big Data Spectrum for Future Information Economy, ICSITech 2015*, pp. 158-163. <https://doi.org/10.1109/ICSITech.2015.7407796>
- [28] Ojha, V.K., Abraham, A., Sñášel, V. (2017). Metaheuristic design of feedforward neural networks: A review of two decades of research. *Engineering Applications of Artificial Intelligence*, 60: 97-116. <https://doi.org/10.1016/j.engappai.2017.01.013>
- [29] Mokhtar, S.A., Wan Ishak, W.H., Norwawi, N.M. (2014). Modelling of reservoir water release decision using neural network and temporal pattern of reservoir water level. *2014 5th International Conference on Intelligent Systems, Modelling and Simulation*, pp. 127-130. <https://doi.org/10.1109/ISMS.2014.27>
- [30] Syaharuddin, Fatmawati, Suprajitno, H. (2022a). Best architecture recommendations of ANN backpropagation based on combination of learning rate, momentum, and number of hidden layers. *JTAM (Jurnal Teori Dan Aplikasi Matematika)*, 6(3): 629-637. <https://doi.org/https://doi.org/10.31764/jtam.v6i3.8524>
- [31] Hayat, C., Limong, S., Sagala, N. (2019). Architecture of back propagation neural network model for early detection of tendency to Type B personality disorders. *Khazanah Informatika: Jurnal Ilmu Komputer Dan Informatika*, 5(2): 115-123. <https://doi.org/10.23917/khif.v5i2.7923>
- [32] Syaharuddin, Fatmawati, Suprajitno, H. (2022b). The formula study in determining the best number of neurons in neural network Backpropagation Architecture with Three Hidden Layers. *Jurnal RESTI (Rekayasa Sistem Dan Teknologi Informasi)*, 6(3): 397-402. <https://doi.org/https://doi.org/10.29207/resti.v6i3.4049>

International Information and Engineering Technology Association Invoice No. 20230103-17148
 Edmonton, AB T5J 3S4, Canada

INVOICE

Customer		Misc	
Name	Vera Mandailina	Date	03/01/2023
		For	

City Mataram Country India Post Code _____
 Phone _____

Qty	Description	Unit Price	TOTAL
	INVOICE Publication fee for paper published in RIA Title: Study of Climate Change In The Mandalika International Circuit Area Using Neural Network Backpropagation ID: 17148		USD 400.00

Sub Total	USD 400.00
Shipping	
0.00%	USD -
TOTAL	USD 400.00

Payment	Select One...	Tax Rate(S)
Comments	T/T advance payment USD\$	
Name		
CC #		
Expires		

Office Use Only

USD Remittance Path
 BENEFICIARY NAME: IIETA-RSMC Beijing LTD
 ACCOUNT NUMBER: 0200296409116032240
 BENEFICIARY ADDRESS: Room 302, Building 3, Jinmao Plaza, Fengtai District, Beijing, PRC
 BENEFICIARY BANKER'S NAME: Industrial and Commercial Bank of China Beijing Municipal Branch, Beijing, PRC
 SWIFT CODE: ICBKCNBJBJM

Make all checks payable to **International Information and Engineering Technology Association**
 Total due in 15 days. Overdue accounts subject to a service charge of 1% per month.

THANK YOU FOR YOUR BUSINESS!

Copyright Transfer Agreement

Please read the terms of this agreement, and send back a scanned copy of the signed original.

Article entitled:

Study of Climate Change in the Mandalika International Circuit Area Using Neural Network Backpropagation

Author/s:

Vera Mandailina*, Atin Nurhalimah, Saba Mehmood, Syaharuddin, Ibrahim

Corresponding author (if more than one author):

Vera Mandailina

Journal Name:

Revue d'Intelligence Artificielle

Publisher:

International Information and Engineering Technology Association

1. Copyright Assignment

The author hereby grants the Publisher the exclusive right to reproduce and distribute the article for commercial use in any other reproductions of similar nature, effective upon acceptance for publication.

2. Author's Warranties

The author warrants that the article is original, written by stated author/s, has not been published before and it will not be submitted anywhere else for publication prior to acceptance/rejection by the Publisher, contains no unlawful statements, does not infringe the rights of others, is subject to copyright that is vested exclusively in the author and free of any third party rights, and that any necessary written permissions to quote from other sources have been obtained by the author/s.

3. Userights

This article, if accepted, will be an open access article distributed under the terms and conditions of the Creative Commons Attribution License (<http://creativecommons.org/licenses/by/4.0/>). Publisher will insert the following note at the end of the published text: © 2022 by the authors; licensee IIETA, Edmonton, Canada. This article is an open-access article distributed under the terms and conditions of the Creative Commons Attribution License (<http://creativecommons.org/licenses/by/4.0/>).

4. Rights of Authors

Authors retain the following rights:

- all proprietary rights relating to the article, other than the rights mentioned in 1. Copyright Assignment, such as patent rights,
- the right to use the substance of the article in future own works, including lectures and books,
- the right to reproduce this article for own purposes, provided the copies are not offered for sale.

An author may self-archive an author-created version of his/her article on his/her own website and or in his/her institutional repository. He/she may also deposit this version on his/her funder's or funder's designated repository at the funder's request or as a result of a legal obligation, provided it is not made publicly available until 12 months after official publication. Furthermore, the author may only post his/her version provided acknowledgement is given to the original source of publication and a link is inserted to the published article on <http://www.iieta.org>. The link must be accompanied by the following text: "The original publication is available also at <http://www.iieta.org>". He/she may use the Publisher's PDF version, which is posted on <http://www.iieta.org>, for the purpose of self-archiving or deposit. Any other use of the article requires permission from the Publisher.

5. Co-Authorship

If the article was prepared jointly with other authors, the signatory of this form warrants that he/she has been authorized by all co-authors to sign this agreement on their behalf, and agrees to inform his/her co-authors of the terms of this agreement.

6. Publication Fee

Please refer to the Instructions for Authors of each IIETA journal for whether the journal charges a publication fee and, if yes, how much the journal charges in publication.

7. Termination

This agreement can be terminated by the author or the Publisher upon two months' notice where the other party has materially breached this agreement and failed to remedy such breach within a month of being given the terminating party's notice requesting such breach to be remedied. No breach or violation of this agreement will cause this agreement or any license granted in it to terminate automatically or affect the definition of the Publisher. After the lapse of forty (40) years of the date of this agreement, this agreement can be terminated without cause by the author or the Publisher upon two years' notice. The author and the Publisher may agree to terminate this agreement at any time. This agreement or any license granted in it cannot be terminated otherwise than in accordance with this section 6.

8. Royalties

This agreement entitles the author to no royalties or other fees. To such extent as legally permissible, the author waives his or her right to collect royalties relative to the article in respect of any use of the article by the Publisher or its sublicensee.

9. Miscellaneous

The Publisher will publish the article (or have it published) in the Journal, if the article's editorial process is successfully completed and the Publisher or its sublicensee has become obligated to have the article published. The Publisher may conform the article to a style of punctuation, spelling, capitalization and usage that it deems appropriate. The author acknowledges that the article may be published so that it will be publicly accessible and such access will be free of charge for the readers. The Publisher will be allowed to sublicense the rights that are licensed to it under this agreement. This agreement will be governed by the laws of Canada.

10. Scope of the Commercial License

The exclusive right and license granted under this agreement to the Publisher for commercial use is as follows:

- a. to prepare, reproduce, manufacture, publish, distribute, exhibit, advertise, promote, license and sub-license printed and electronic copies of the article, through the Internet and other means of data transmission now known or later to be developed; the foregoing will include abstracts, bibliographic information, illustrations, pictures, indexes and subject headings and other proprietary materials contained in the article,
- b. to exercise, license, and sub-license others to exercise subsidiary and other rights in the article, including the right to photocopy, scan or reproduce copies thereof, to reproduce excerpts from the article in other works, and to reproduce copies of the article as part of compilations with other works, including collections of materials made for use in classes for instructional purposes, customized works, electronic databases, document delivery, and other information services, and publish, distribute, exhibit and license the same.

Where this agreement refers to a license granted to the Publisher in this agreement as exclusive, the author commits not only to refrain from granting such license to a third party but also to refrain from exercising the right that is the subject of such license otherwise than by performing this agreement.

The Publisher will be entitled to enforce in respect of third parties, to such extent as permitted by law, the rights licensed to it under this agreement.

Corresponding author's signature:



Name printed:

Vera Mandailina

Date:

January 07, 2023

Study of Climate Change in the Mandalika International Circuit Area Using Neural Network Backpropagation

Vera Mandailina^{1*}, Atin Nurhalimah¹, Saba Mehmood², Syaharuddin¹, Ibrahim³

¹ Department of Mathematics Education, Universitas Muhammadiyah Mataram, Mataram, Indonesia

² Department of Mathematics Education, Thal University Bhakkar, Punjab, Pakistan

³ Department of Environmental Engineering, Universitas Muhammadiyah Mataram, Mataram, Indonesia

Corresponding Author Email: yrmandailina@gmail.com

<https://doi.org/10.18280/ria.xxxxxx>

ABSTRACT

Received:

Accepted:

Keywords:

neural network, backpropagation, climate change, schmidt-ferguson classification

Climate change is a global phenomenon that also causes small-scale effects. This study aims to determine future climate changes in the Mandalika International Circuit area using the artificial neural network of the MATLAB GUI-based backpropagation method. The simulation stage used daily rainfall intensity data collected in the Mandalika International Circuit area from 2012-2021 (365 data). A preliminary analysis concluded that the Mandalika International Circuit area is dominated by a very wet climate according to the Schmidt-Ferguson classification, which occurred in 2012, 2013, 2017, and 2021. This study used two architectural models with two and three hidden layers. The TRAINRP training function and the LOGSIG activation function were utilized at each hidden layer. Between the two architectures, the better architecture was selected, namely the 100-50-10-1 (three hidden layers) that resulted in an accuracy rate of 99.90% and an MSE of 0.041237 achieved in the 258th iteration. These results indicate that the area has a very wet climate with the highest rain intensity in March and the lowest in January. The results of this study show that the backpropagation method can be used to help formulate an alternative policy on the measures for handling and mitigating extreme climate change in upcoming periods, especially during international events at the Mandalika International Circuit area.

1. INTRODUCTION

Indonesia has recently hosted two international racing sports events, namely the WSBK (World Superbike) and MotoGP (Grand Prix Motorcycle) at Mandalika International Circuit. These events are prestigious motor racing sports events at the global level. Mandalika International Circuit is an arena used to hold international racing events located in the Mandalika Special Economic Zone (SEZ). In organizing such events, it is required to make efforts to anticipate climate conditions, especially the intensity of rainfall. According to Haliza et al. [1], climate change can be defined as a change in the state of the climate. This change can be identified, for example by using statistical tests, by changes in the mean or variability of its properties that persist for a long time, usually for decades or longer.

Sari et al. [2] stated that forecasting is an activity to predict what will happen in the future. Siregar and Wanto [3] further elaborated that prediction is a presumption about the occurrence of an event in the future and forecasting is very helpful in planning and policy-making processes both in the government and non-government sectors. Predictive analysis is very important to conduct in a study so that the research becomes more precise and directed. Therefore, a good analysis using tested methods is needed so that the resulting accuracy can be truly accountable. Lee et al. [4] argued that rainfall prediction is essential to prevent floods, manage

water resources, save lives and property, and secure economic activities.

One of the prediction methods widely used by researchers is artificial neural networks (ANN). Nogay et al. [5] stated that artificial neural network technology is one of the latest products of humanity's efforts in the research and imitation of nature. Artificial neural networks are programs designed to simulate the behavior of simple biological nervous systems. An artificial neural network is shaped by structuring a foreseen number of artificial neural cells in a certain architecture to process data. Nayak et al. [6] argued that artificial neural network algorithms have become an attractive inductive approach in rainfall prediction owing to their high nonlinearity, flexibility, and data-driven learning in building models without any prior knowledge about catchment behavior and flow processes. They are successfully used today in various aspects of science and engineering because of their ability to model both linear and non-linear systems without the need to make assumptions as are implicit in most traditional statistical approaches. The neural network has been used as a more effective model than simple linear regression. According to Abbot & Marohasy [7], the main advantage of neural networks lies in their ability to represent linear and non-linear relationships and the ability to learn the relationships directly from the data being modelled. Traditional linear models are inadequate for modeling data containing non-linear characteristics. This is emphasized by Chaturvedi [8] that an artificial neural

network can be used for making predictions as it can examine and determine the historical data used for prediction. NN has a better accuracy than statistical and mathematical models. They work on the principle of biological neurons, which is a type of data-driven technique. The conjunction between meteorological parameters and rainfall can be analyzed using NN. Furthermore, Wahyuni et al. [9] stated that climate change in the world has caused a lot of impacts on changing rainfall patterns. This requires a method that can predict rainfall based on rainfall patterns that occur after climate change. Disasters can be anticipated with accurate information about how much rainfall will fall at a location in a certain period.

One of the important aspects of implementing backpropagation for forecasting rainfall is the change of seasons. According to Sharma & Nijhawan [10] and Govinda & Hiremath [11], backpropagation is the common method for training neural networks. This is a supervised learning method that requires a dataset of the desired output from many inputs, making up the training set and is most useful for the feed-forward network (networks that have no feedback or simply no connection in that loop). Hayat et al. [12] further described that the backpropagation algorithm architecture consists of three layers, namely the input layer, hidden layer, and output layer. At the input layer, there is no computational process, but at this layer, the X signal input occurs at the hidden layer. At the hidden and output layer, the computation process occurs for weight and bias, and the magnitude of the hidden output and output layer is also calculated based on certain activation functions. In this backpropagation algorithm, the binary sigmoid activation function was used because the expected output is between 0 and 1. At the input layer, the input was varied with X_n ; while at the hidden layer there were weight (V_{ij}) and bias (V_{oj}), and Z as the hidden layer data. At the output layer, there are weight (W_{ij}), bias (W_{oj}), and Y as the output data.

The backpropagation method is a method that is quite well known and has been widely applied by previous researchers, including Jabjone [13] who applied artificial neural networks to predict rice yields in Thailand's Phimai District in 2002-2007. The results show that neural networks (8, 19, and 17) provided the lowest value of RMSE of 10.57 and MAPE of 2.3%. Naik & Pathan [14] also presented a modified backpropagation artificial neural network model for classifying and predicting Indian monsoon precipitation. The weather data were collected from the Meteorological Department with 80% of the total data were used for training purposes and 20% for validation purposes. The accuracy of the predictions achieved was between 80% and 90%, thus the neural networks were suitable for predicting precipitation. According to Wu et al. [15], the artificial neural network model can recognize patterns of data through learning process and it has been applied to attain medical decision support. They utilized 15 data inputs with a single hidden layer architecture and obtained an accuracy rate of 85%. Furthermore, Wanto et al. [16] conducted a study to predict the Consumer Price Index (CPI) of the foodstuffs group using the artificial neural network backpropagation and Fletcher Reeves Conjugate Gradient. This study resulted in an accuracy rate of 75% and an MSE of 0.0142803691 using the backpropagation method with architecture of 12-15-1, the best architecture used. Lesnussa et al. [17] also utilized the artificial neural network of backpropagation to predict rainfall in the city of Ambon. This study utilized monthly

rainfall data from 2011 to 2015 with a one-layer hidden 3-12-1 architecture. The results of training and testing data show that the accuracy rate of precipitation prediction obtained was 80% with an alpha of 0.7, an epoch of 10000, and an MSE value of 0.022.

According to Wahyuni et al. [9], based on their research a learning rate of 0.01, an architecture (4-5-3) of 4 inputs, 5 hidden layers, and 3 outputs with a maximum iteration of 1500 and error tolerance of 0.01 obtained the best results at the maximum iteration condition (1500) with an MSE value of 0.342. Setti & Wanto [18] analyzed the prediction of the highest number of internet users in the world using the backpropagation algorithm with a focus on data in 25 countries from 2013-2017. The accuracy result was 92% and the MSE was 0.0015 on the best network architecture of 3-50-1. In another study, Pamungkas et al. [19] applied the backpropagation to predict the production of *Litopenaeus vannamei* and *Penaeus monodon* shrimps in Indramayu Regency, which performed well during training. They recommended the trainGD function as a good training function with the lowest MAPE of 19.28%. Kouadri et al. [20] also evaluated the suitability of groundwater for human consumption and modelled water quality indices, temporally and spatially, using artificial neural networks. A total of 57 samples were harvested from eight different wells in the region throughout 2016 and the model recorded an MSE with an error rate of 9.3%. Syaharuddin et al. [21] applied backpropagation with architecture 144-10-5-1 for wind speed prediction reaching an accuracy rate of 99.9% with a learning rate of 0.7. In another study, Syaharuddin et al. [22] predicted an inflation rate using the backpropagation method and obtained an average yield of 0.213 with an MSE of 0.0053. They utilized a 120-10-5-1 architecture, trainrp as the training function and logsig as the activation function.

The results of these studies show that there have been many studies that apply the backpropagation neural network using two hidden layers. The input data used averaged 3-5 years, learning rate 0.7, and MSE value 0.0001-1.64. Therefore, so far, there is no research that uses backpropagation with three hidden layers and compares the accuracy results with two hidden layers. In addition, the learning rate that the researchers use is too large, where the role of learning rate accelerates the process of training and testing data but will affect the accuracy of the architecture. Therefore, one of the novelties in this research is to add a momentum parameter to the three hidden layer architecture to help reduce the resulting error. Furthermore, in this research we use data for the last 10 years, using a relatively small learning rate. We tested the architecture on a case study of rainfall data in the Mandalika International Circuit area. Hopefully, the prediction results can be used to determine rainfall trends in future and climate change in the region.

2. RESEARCH METHODS

2.1 Data Selection

This study used quantitative data to solve the research problems. The focus of the data used is the daily rainfall time series data in the Mandalika International Circuit area in Indonesia from 1 January 2012 to 31 December 2021 at 8.895oS and 116.306oE.

2.2 Research Procedure

The accuracy parameter used in this forecasting was the Mean Square Error (MSE) and Root Mean Square Error (RMSE) assisted by MATLAB'S Graphical User Interface (GUI). Architectural design used to find the optimal NN configuration is also known as NN structural training, which consists of three NN layers, namely one input layer, one hidden layer, and one output layer. The number of neurons in the input layer and output layer depends on the problem itself [23][24]. This is in line with Haviluddin & Alfred [25], who

stated that the backpropagation network architecture generally consists of three layers, namely the input layer, the hidden layer, and the output layer. Similarly, the proper design of NN offers significant improvements to the learning system. Its components, such as nodes, weights, and layers are responsible for the development of various NN models. Single-layer perceptron (SLP) consists of input and output layers, making it the simplest form of an NN model [26]. The authors formulated and used simple and necessary research procedures for the research, as presented in Figure 1.

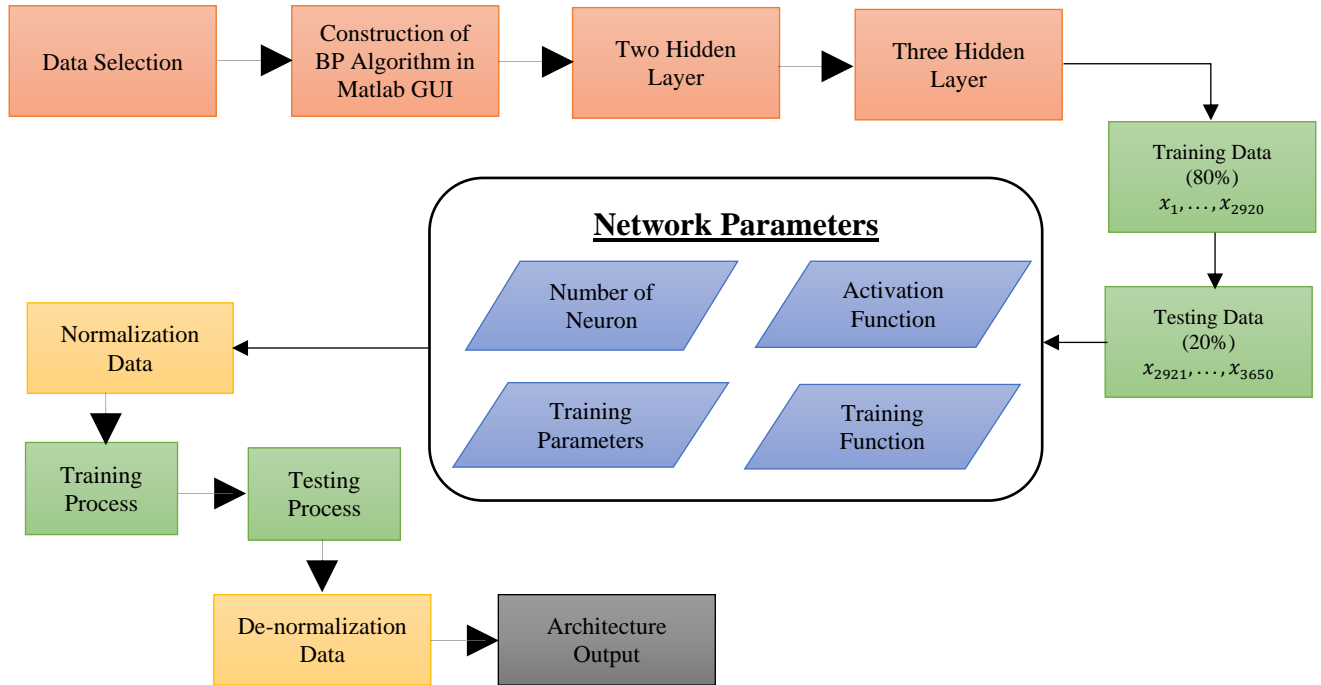


Figure 1. Flowchart of Research

Based on Figure 1, after the data were obtained, the backpropagation algorithm was then determined using the MATLAB GUI. The artificial neural network model of the backpropagation method used to determine patterns was implemented to separate the data that will be used as training data (from 2012 to 2019 or 80%) and testing data (from 2020 to 2021 or 20%). Afterward, the prediction phase used data from 2012 to 2021 to predict rainfall data in 2022 (a 10 year-span). We use Z-score techniques to normalize and de-normalize the data (equation 1). The last stage of interplay and conclusion of the output results were obtained from the MATLAB R2013a GUI, with input results including graphs, epochs, prediction results, MSEs and RMSEs of each datum

$$Z = \frac{x_i - \bar{x}_i}{\sigma} \quad (1)$$

2.3 Neural Network Backpropagation Architecture

Backpropagation architecture consisting of input layer, hidden layer, and output layer was connected by activation and weight functions. Therefore, data prediction y_k can be determined by formula:

$$y_k = f \left(w_{0k} + \sum_{j=1}^p w_{jk} \cdot f \left(v_{0j} + \sum_{i=1}^n v_{ij} \cdot x_i \right) \right) \quad (2)$$

variables $x_1, x_2, \dots, x_i, \dots, x_n$ are an input layer determined by the amount of input data and only one layer, y_1, y_2, \dots, y_k are the output layer as well as one layer. In equation (2), $v_{11}, v_{1j}, \dots, v_{ij}$ are weight matrices that connect the input layer and the hidden layer, while $w_{11}, w_{1k}, \dots, w_{jk}$ are weight matrices that connect the hidden layer and the output layer.

Backpropagation architecture design was used to determine the best architecture with certain parameters through training and testing of previously shared data. In this study, the architectural parameters used were from the NN architecture of the backpropagation method using a learning rate of 0.1 and a momentum of 0.8. Previous research carried out by Mokhtar et al. [27] for data set 2 showed that learning rate of 0.1 and a momentum of 0.8 will generate the best result and the best network architecture achieved was 5-25-1. Syaharuddin et al. [28] in their research also showed that the learning rate value is recommended at intervals of 0.1-0.2 with a RE model value of 0.938 (very high), the momentum value at intervals of 0.7-0.9 with a RE model value of 0.925 (very high), and the number of neurons in the input layer that is smaller than the number of neurons in the hidden layer with a RE model value of 0.932 (very high). Complete information on the network architecture used is as follows

Setting Parameters:

Max. Epoch	: 1000
Error (Goal)	: 0.001
Learning Rate (LR)	: 0.1
Momentum	: 0.8
Show Step	: 25
Activation Function	: logsig (layer hidden) and purelin (layer output).
Training Function	: trainrp

Amount of Neuron (2 layers hidden)

Layer Input	: 10 years x 365 days (prediction data), 8 years x 365 days (training data), and 2 years x 365 days (testing data)
Layer hidden-1	: 100
Layer hidden-2	: 50
Layer output	: 1

Amount of Neuron (3 layers hidden)

Layer Input	: 10 years x 365 days (prediction data), 8 years x 365 days (training data), and 2 years x 365 days (testing data)
-------------	--

Layer Hidden-1	: 100
Layer Hidden-2	: 50
Layer Hidden-3	: 10
Layer Output	: 1

We set the parameters for the backpropagation architecture at the initial stage or before training and testing data. We use a binary sigmoid (logsig) activation function on each hidden layer according to equation (3).

$$f(x) = \frac{1}{1 + e^{-x}} \quad (3)$$

3. RESULTS AND DISCUSSION**3.1 Preliminary Analysis Results**

The input of rainfall data for the Mandalika International Circuit area was obtained daily from 2012 to 2021, so 365 data were obtained for each year. The amount of rainfall (mm) calculated each month is displayed in Table 1.

Table 1. The input of rainfall data for the Mandalika International Circuit from 2012 to 2022

Month	2012	2013	2014	2015	2016	2017	2018	2019	2020	2021
January	158,42	139,12	140,54	125,64	15,18	203,89	173,24	56,6	37,54	290,62
February	112,17	67,84	47,53	11,44	18,57	76,91	87,59	4,33	38,98	55,16
March	110,34	28,81	27,62	10,61	4,71	68,53	32,53	18,67	15,98	79,2
April	86,58	81,24	29,93	28,74	21,13	67,52	45,77	24,27	34,56	64,97
May	178,7	142,23	88,85	23,97	94,87	116,33	114,26	69,01	49,93	132,35
June	272,96	285,29	276,43	211,11	250,58	152,82	164,59	220	234,85	156,38
July	296,17	288,77	281,64	161,29	183,68	264,85	270,96	231,66	211,46	206,95
August	138,32	230,58	152,36	209,63	233,14	219,3	149,25	175,17	180,63	121,11
September	287,1	261,98	202,85	226,52	265,41	202,57	218,53	148,01	228,49	232,83
October	185,04	169,07	148,02	95,01	299,36	281,2	90,99	99,81	361,57	294,08
November	187,25	273,03	146,92	125,23	137,15	196,93	148,86	172,01	190,86	257,18
December	93,46	286,69	204,6	92,42	229,21	328,33	135,99	134,92	248,73	241,48
Q-value	0	0,0909	0,3333	0,5	0,5	0	0,2	0,5	0,714	0,0909
Category	Very wet	Very wet	Rather wet	Rather wet	Rather wet	Very wet	wet	Rather wet	Moderate	Very wet

After calculating the amount of rainfall (mm) per month as seen in Table 1, it was discovered that in 2012, 2013, 2017, and 2021 the comparative value (Q) was $0 < Q < 0.143$, so according to the Schmidt Ferguson Climate classification table, they are categorized as very wet months. Meanwhile, the years 2015, 2016, and 2019 obtained a ratio value of $0.600 < Q < 1,000$ so they fall into the category of months with temperate climate. In 2014, the comparison value was $0.333 < Q < 0.600$, making the months categorized as rather wet climate. However, the year 2020 had a very high comparison value (Q) of 0.714, making the months fall under the category of moderate.

Thus, from the results described above, it can be concluded that based on 10 years of rainfall data, the climate in Mandalika International Circuit area according to the Schmidt-Ferguson climate classification can mostly be categorized as very wet climate, which occurred in 2012, 2013, 2017, and 2021, or the peak of high rainfall. Meanwhile, the climate in 2014 was slightly wet; 2015, 2016, and 2019 were dominated by the medium climate;

2018 was mostly categorized as a wet climate; while 2020 was dominated by the extraordinarily dry climate or the peak of the long dry season occurring in the Mandalika International Circuit area.

3.2 Training, Testing, and Data Prediction Phase

Generally, there are two stages in the prediction process of NN backpropagation, namely the training and testing stages. According to Hayat et al. [29], the training stage uses data to produce results of backpropagation neural network training, while the testing stage implements the weight of NN from the training phase into the testing. In this study, the architectural pattern of the two hidden layers was 100-50-1 with an input layer of 365, a one hidden layer of 100, two hidden layers of 50 and an output layer of 1. Meanwhile, the architectural pattern for the three hidden layers was 100-50-10-1 with an input layer of 365, a one hidden layer of 100, two hidden layers of 50, three hidden layers of 10, and a layer output of 1. Data training and testing results are presented in Table 2.

Table 2. Data Training and Testing Results

Hidden Layer	Stage	Data	Interval	Amount of Data	Iteration	MSE	RMSE
2 Hidden Layers (100-50-1)	Training	8 years (80%)	2012-2019	8 x 365	376	0.0382	0.1954
	Testing	2 years (20%)	2020-2021	2 x 365	37	0.0526	0.2294
3 Hidden Layers (100-50-10-1)	Training	8 years (80%)	2012-2019	8 x 365	133	0.0375	0.1936
	Testing	2 years (20%)	2020-2021	2 x 365	46	0.0502	0.2248

Based on Table 2, the two hidden layers in the training stage obtained an MSE value of 0.0382 and RMSE value of 0.1954 achieved during the 376th epoch. Meanwhile, the testing stage obtained an MSE value of 0.0526 and RMSE value of 0.2294 achieved in the 37th epoch. Furthermore, the three hidden layers in the training stage obtained an MSE value of 0.0375 and RMSE value 0.1936 achieved in the 133rd epoch, and the testing stage obtained an MSE value of

0.0502 and RMSE value 0.2248 achieved in the 46th epoch. The training and testing results show that the architecture with three hidden layers performs well because the MSE and RMSE values are smaller when compared to the architecture with two hidden layers. Then, we strengthen this argument by looking at the pattern of data distribution according to the regression plot can be seen in Figure 2.

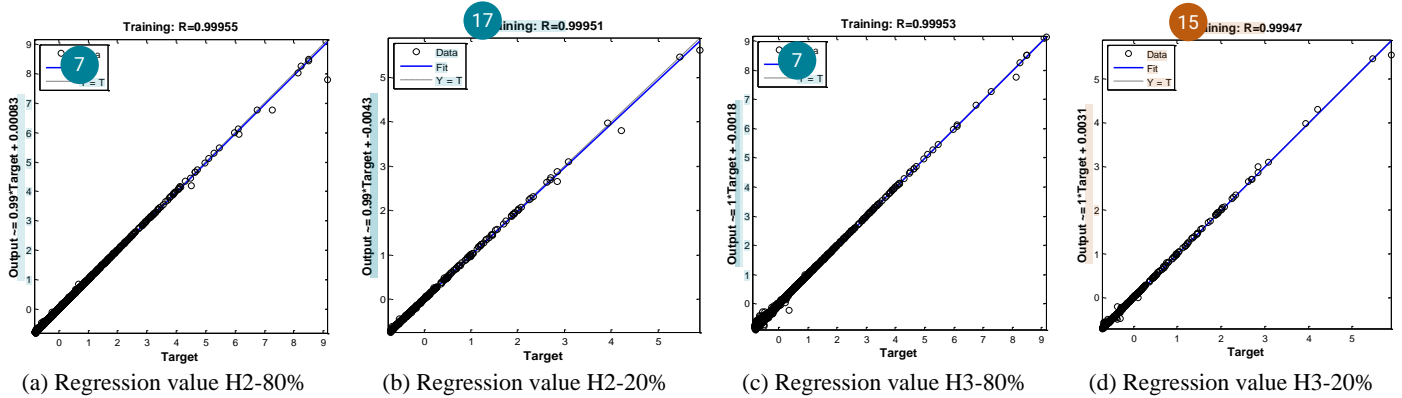


Figure 2. Plot Regression of Training and Testing Data

Based on Figure 2, we can see that the data distribution pattern using the architecture with three hidden layers is better than the architecture with two hidden layers. Then, the

prediction of daily rainfall data in 2022 obtained results as presented in Figures 3 and Figure 4.

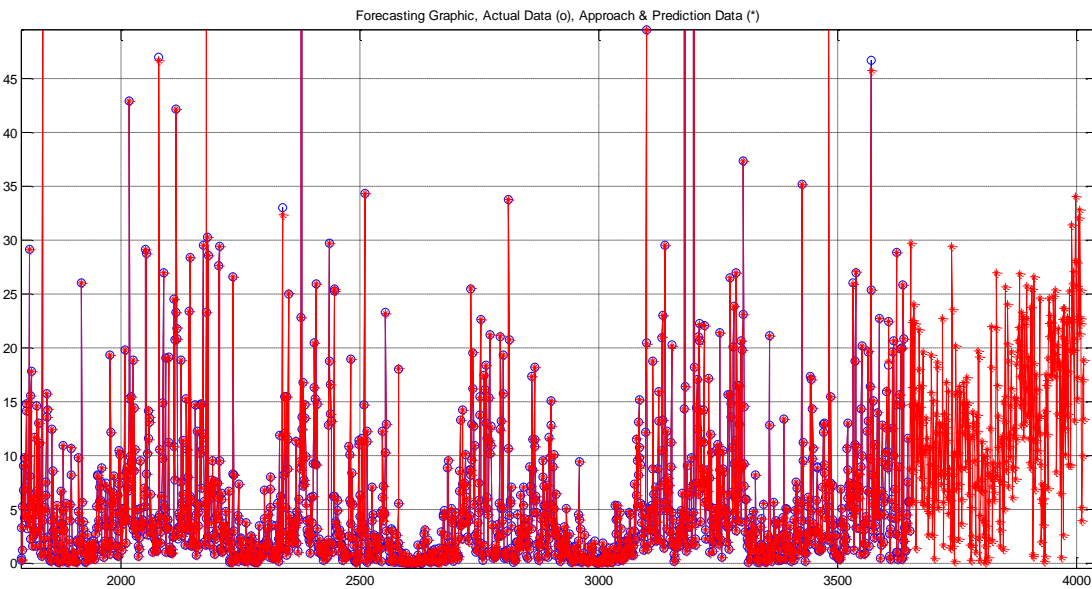


Figure 3. Results of Daily Rainfall Prediction from Actual Data Using Two Hidden Layers

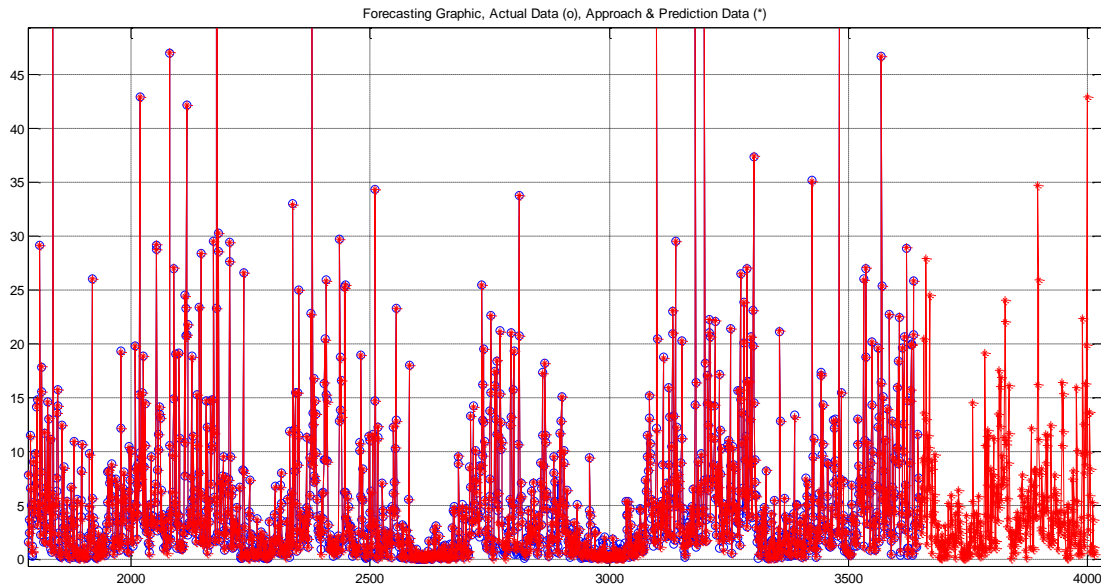


Figure 4. Results of Daily Rainfall Prediction from Actual Data Using Three Hidden Layers

Based on Figure 3, the daily rainfall prediction using two hidden layers to process 10 years (10 x 365 data) obtained an MSE of 0.0417 and RMSE of 0.2047 achieved during the 172th. Meanwhile, the use of three hidden layers as shown in Figure 4 obtained an MSE of 0.0408 and RMSE of 0.2022 achieved during the 164th epoch. Thus, from these two architectural models, it was found that the three hidden layers (100-50-10-1) have predictive results derived from the actual data and can be used for forecasting calculations in future periods; or the MSE and RMSE value of three hidden layers is smaller than that of two hidden layers. This finding is supported by the research of Syaharuddin et al. [30] who

argued that the determination of the best number of neurons on backpropagation using three layers with an architecture of 36-73-37-19-1 showed the highest level of accuracy at the time of precipitation data, obtaining an MSE of 0.0291 and an accuracy rate of 99.94% for data training and 99.99% for data testing.

Network performance can still be improved by increasing training data and replacing parameters that can affect performance such as error goals, epoch size, network architecture, and type of activation function. In the following, the authors present the 2022 rainfall forecasting results using two and three hidden layers, as seen in Table 3.

Table 3. Rainfall Data Prediction for 2022

Month	Forecasting			
	Two Hidden Layers		Three Hidden Layers	
	Rainfall (mm)	Category	Rainfall (mm)	Category
January	520.8002	Wet month	83.9642	Humid month
February	248.2224	Wet month	264.5902	Wet month
March	527.2139	Wet month	406.3721	Wet month
April	320.5872	Wet month	290.0869	Wet month
May	297.8724	Wet month	365.1046	Wet month
June	260.7365	Wet month	245.302	Wet month
July	176.2403	Wet month	257.8995	Wet month
August	199.3703	Wet month	306.0636	Wet month
September	149.3004	Wet month	282.586	Wet month
October	290.3435	Wet month	299.5919	Wet month
November	366.5233	Wet month	283.674	Wet month
December	584.0019	Wet month	97.4145	Humid month
Q-value	0		0	
Category	Very Wet		Very Wet	

Table 3 shows the result of daily to monthly calculation for 2022 rainfall data in the Mandalika International Circuit area. Following the training stage, out of the two architectures, the best architecture resulted was the 100-50-10-1 (three hidden layers), where the very wet climate criteria according to the Schmidt-Ferguson classification would see the highest rainfall intensity in March with rainfall gains of 406.3721 mm and wet month descriptions, while the lowest rainfall intensity would happen in January with rainfall gains of 83.9642, making it classified as a humid month.

After finding out the climate change forecasting results, especially dynamic changes in the rainfall intensity in the Mandalika International Circuit area, the authors recommend the government or the organizers of WSBK (World Superbike) and MotoGP (Grand Prix Motorcycle) to hold these events in December or January. This aims to avoid high rainfall intensity such as those during previous events and to certainly minimize the occurrence of accidents due to slippery tracks during these events.

4. CONCLUSIONS

Based on the Schmidt-Ferguson Criteria Climate Classification, the Mandalika International circuit area was dominated by the very wet climate in 2012, 2013, 2017, and 2021. Meanwhile, in 2014, the climate was moderately wet; 2015, 2016, and 2019 were dominated by the medium climate; 2018 was dominated by the wet climate; while 2020 was dominated by the extraordinary dry climate. The results obtained for two hidden layers in the training stage show an MSE of 0.0382 and RMSE of 0.1954, which was achieved in the 376th epoch, while in the testing stage, the authors obtained an MSE of 0.0526 and RMSE of 0.2294, achieved in the 37th epoch. On the other hand, using the three hidden layers in the training stage, the authors obtained an MSE of 0.0375 and RMSE of 0.1936 achieved during the 133rd epoch, while in the testing stage, the authors obtained an MSE of 0.0502 and RMSE of 0.2248 achieved in the 46th epoch. Furthermore, based on the implementation and testing carried out using the two architectural models, the best architecture obtained was the 100-50-10-1 (three hidden layers) with a "trainrp" training function and "logsig, logsig, logsig, purelin" activation function obtaining a MSE of 0.0408 and RMSE of 0.2022, which was achieved in the 164th epoch. This indicates that the climate of the Mandalika International circuit is a very wet climate with the highest rainfall intensity in March and the lowest rainfall intensity in January.

Therefore, the authors advise the government or organizers of WSBK (World Superbike) and MotoGP (Grand Prix Motorcycle) at the Mandalika International Circuit to avoid the high intensity rainfall such as those in the previous events. The authors recommend that these events be held in January or December to avoid slippery tracks and accidents during the races so that the activities may run optimally.

REFERENCES

- [1] Haliza, A. R. (2018). Climate Change Scenarios in Malaysia: Engaging the Public. *International Journal of Malay-Nusantara Studies*, 1(2), 55–77. <https://journal.unhas.ac.id/index.php/IJoM-NS/article/view/5518>
- [2] Sari, N. R., Mahmudy, W. F., & Wibawa, A. P. (2016). Backpropagation on neural network method for inflation rate forecasting in Indonesia. *International Journal of Advances in Soft Computing and Its Applications*, 8(3), 69–87. <http://www.i-csrs.org/ijasca/>
- [3] Siregar, S. P., & Wanto, A. (2017). Analysis of Artificial Neural Network Accuracy Using Backpropagation Algorithm In Predicting Process (Forecasting). *IJISTECH (International Journal Of Information System & Technology)*, 1(1), 34. <https://doi.org/10.30645/ijistech.v1i1.4>
- [4] Lee, J., Kim, C. G., Lee, J. E., Kim, N. W., & Kim, H. (2018). Application of artificial neural networks to rainfall forecasting in the Geum River Basin, Korea. *Water (Switzerland)*, 10(10), 1–14. <https://doi.org/10.3390/w10101448>
- [5] Nogay, H. S., Akinci, T. C., & Eidukeviciute, M. (2012). Application of artificial neural networks for short term wind speed forecasting in Mardin, Turkey. *Journal of Energy in Southern Africa*, 23(4), 2–7. <https://doi.org/10.17159/2413-3051/2012/v23i4a3173>
- [6] Nayak, D. R., Mahapatra, A., & Mishra, P. (2013). A Survey on Rainfall Prediction using Artificial Neural Network. *Int. J. Comput. Appl.*, 72(16), 32–40. <https://doi.org/https://doi.org/10.5120/12580-9217>
- [7] Abbot, J., & Marohasy, J. (2014). Input selection and optimisation for monthly rainfall forecasting in queensland, australia, using artificial neural networks. *Atmospheric Research*, 138, 166–178. <https://doi.org/10.1016/j.atmosres.2013.11.002>
- [8] Chaturvedi, A. (2015). Rainfall Prediction using Back-Propagation Feed Forward Network. *International Journal of Computer Applications*, 119(4), 1–5. <https://doi.org/10.5120/21052-3693>
- [9] Wahyuni, E. G., Fauzan, L. M. F., Abriyani, F., Muchlis, N. F., & Ulfa, M. (2018). Rainfall prediction with backpropagation method. *Journal of Physics: Conference Series*, 983(1). <https://doi.org/10.1088/1742-6596/983/1/012059>
- [10] Sharma, A., & Nijhawan, G. (2015). Rainfall Prediction Using Neural Network. *International Journal of Computer Science Trends and Technology*, 3(3), 65–69. <http://ijcstjournal.org/Vol3Issue3No1.html>
- [11] Govinda, K., & Hiremath, S. (2014). Rainfall prediction using artificial neural network. *International Journal of Applied Engineering Research*, 9(23), 21243–21254. <https://doi.org/10.29244/j.agromet.31.1.11-21>
- [12] Hayat, C., Soenandi, I. A., Limong, S., & Kurnia, J. (2020). Modeling of prediction bandwidth density with backpropagation neural network (BPNN) methods. *IOP Conference Series: Materials Science and Engineering*, 852(1). <https://doi.org/10.1088/1757-899X/852/1/012127>
- [13] Jabjone, S. (2013). Artificial Neural Networks for Predicting the Rice Yield in Phimai District of Thailand. *International Journal of Electrical Energy*, 1(3), 177–181. <https://doi.org/10.12720/ijoe.1.3.177-181>
- [14] Naik, A. R., & Pathan, S. . (2013). Indian Monsoon Rainfall Classification And Prediction Using Robust Back Propagation Artificial Neural Network. *International Journal of Emerging Technology and Advanced Engineering*, 3(13), 99–101. <https://doi.org/https://doi.org/10.1007/s00477-013-0695-0>
- [15] Wu, C. F., Wu, Y. J., Liang, P. C., Wu, C. H., Peng, S. F., & Chiu, H. W. (2017). Disease-free survival assessment by artificial neural networks for hepatocellular carcinoma patients after radiofrequency ablation. *Journal of the Formosan Medical Association*, 116(10), 765–773. <https://doi.org/10.1016/j.jfma.2016.12.006>
- [16] Wanto, A., Zarlis, M., Sawaluddin, & Hartama, D. (2017). Analysis of Artificial Neural Network Backpropagation Using Conjugate Gradient Fletcher Reeves in the Predicting Process. *Journal of Physics: Conference Series*, 930(1). <https://doi.org/10.1088/1742-6596/930/1/012018>
- [17] Lesnussa, Y. A., Mustamu, C. G., Kondo Lembang, F., & Talakua, M. W. (2018). Application Of Backpropagation Neural Networks In Predicting Rainfall Data In Ambon City. *International Journal of Artificial Intelligence Research*, 2(2), 1–9. <https://doi.org/10.29099/ijair.v2i2.59>
- [18] Setti, S., & Wanto, A. (2019). Analysis of Backpropagation Algorithm in Predicting the Most

- Number of Internet Users in the World. *Jurnal Online Informatika*, 3(2), 110. <https://doi.org/10.15575/join.v3i2.205>
- [19] Pamungkas, A., Zulkarnain, R., Adiyana, K., Waryanto, Nugroho, H., & Saragih, A. S. (2020). Application of Artificial Neural Networks to forecast *Litopenaeus vannamei* and *Penaeus monodon* harvests in Indramayu Regency, Indonesia. *IOP Conference Series: Earth and Environmental Science*, 521(1), 1–9. <https://doi.org/10.1088/1755-1315/521/1/012018>
- [20] Kouadri, S., Kateb, S., & Zegait, R. (2021). Spatial and temporal model for WQI prediction based on back-propagation neural network, application on EL MERK region (Algerian southeast). *Journal of the Saudi Society of Agricultural Sciences*, 20(5), 324–336. <https://doi.org/10.1016/j.jssas.2021.03.004>
- [21] Syaharuddin, Pramita, D., Nusantara, T., & Subanji. (2020). Computational of distribution of wind speed as preliminary information for fishers: Case study in lombok sea. *International Journal of Advanced Trends in Computer Science and Engineering*, 9(3). <https://doi.org/10.30534/ijatcse/2020/165932020>
- [22] Syaharuddin, Pramita, D., Nusantara, T., & Subanji. (2021). Forecasting Using Back Propagation with 2-Layers Hidden. *Journal of Physics: Conference Series*. <https://doi.org/10.1088/1742-6596/1845/1/012030>
- [23] Ojha, V. K., Dutta, P., Chaudhuri, A., & Saha, H. (2015). Convergence analysis of backpropagation algorithm for designing an intelligent system for sensing manhole gases. In *Hybrid Soft Computing Approaches: Research and Applications* (Vol. 611, pp. 215–236). https://doi.org/10.1007/978-81-322-2544-7_7
- [24] Bai, Y., Li, Y., Wang, X., Xie, J., & Li, C. (2016). Air pollutants concentrations forecasting using back propagation neural network based on wavelet decomposition with meteorological conditions. *Atmospheric Pollution Research*, 7(3), 557–566. <https://doi.org/10.1016/j.apr.2016.01.004>
- [25] Haviluddin, & Alfred, R. (2016). A genetic-based backpropagation neural network for forecasting in time-series data. *Proceedings - 2015 International Conference on Science in Information Technology: Big Data Spectrum for Future Information Economy, ICSITech 2015*, 158–163. <https://doi.org/10.1109/ICSITech.2015.7407796>
- [26] Ojha, V. K., Abraham, A., & Snášel, V. (2017). Metaheuristic design of feedforward neural networks: A review of two decades of research. *Engineering Applications of Artificial Intelligence*, 60, 97–116. <https://doi.org/10.1016/j.engappai.2017.01.013>
- [27] Mokhtar, S. A., Wan Ishak, W. H., & Norwawi, N. M. (2014). *Modelling of Reservoir Water Release Decision Using Neural Network and Temporal Pattern of Reservoir Water Level*. 127–130. <https://doi.org/DOI:10.1109/ISMS.2014.27>
- [28] Syaharuddin, Fatmawati, & Suprajitno, H. (2022a). Best Architecture Recommendations of ANN Backpropagation Based on Combination of Learning Rate, Momentum, and Number of Hidden Layers. *JTAM (Jurnal Teori Dan Aplikasi Matematika)*, 6(3), 629–637. <https://doi.org/https://doi.org/10.31764/jtam.v6i3.8524>
- [29] Hayat, C., Limong, S., & Sagala, N. (2019). Architecture of Back Propagation Neural Network Model for Early Detection of Tendency to Type B Personality Disorders. *Khazanah Informatika: Jurnal Ilmu Komputer Dan Informatika*, 5(2), 115–123. <https://doi.org/10.23917/khif.v5i2.7923>
- [30] Syaharuddin, Fatmawati, & Suprajitno, H. (2022b). The Formula Study in Determining the Best Number of Neurons in Neural Network Backpropagation Architecture with Three Hidden Layers. *Jurnal RESTI (Rekayasa Sistem Dan Teknologi Informasi)*, 6(3), 397–402. <https://doi.org/https://doi.org/10.29207/resti.v6i3.4049>

**International Information & Engineering
Technology Association**

#2020, Scotia Place Tower One, 10060 Jasper Avenue, Edmonton,
AB T5J 3R8, Canada
Tel: +1 780 218 9926; Fax: +1 780 341 0600
www.iieta.org



Acceptance Letter

Revue d'Intelligence Artificielle

January 3, 2023

Vera Mandailina

Department of Mathematics Education,
Universitas Muhammadiyah Mataram,
Mataram, Indonesia

Dear Vera Mandailina, Atin Nurhalimah, Saba Mehmood, Syaharuddin, Ibrahim

MS: Study of Climate Change in the Mandalika International Circuit Area Using Neural Network Backpropagation

I am pleased to inform you that as per the recommendation of the editorial board, your above-mentioned manuscript has been accepted for publication in *Revue d'Intelligence Artificielle* (ISSN 0992-499X).

Please note the following points, and ensure compliance:

- 1) Page Proofs of your paper will also be sent to you for minor corrections and approval.
- 2) Provide us with your E-mail ID for future correspondence.
- 3) Provide complete postal address with correct postal-code.
- 4) The corresponding author would receive a PDF of the published paper.
- 5) If your paper is found with plagiarism content after the release of Acceptance Letter, it will not be published in the Journal.

It is recommended that you cite this and other published works from International Information and Engineering Technology Association (www.iieta.org) in your papers to be published in other journals.

Yours sincerely,



Date: January 3, 2023
Place: Edmonton, Canada